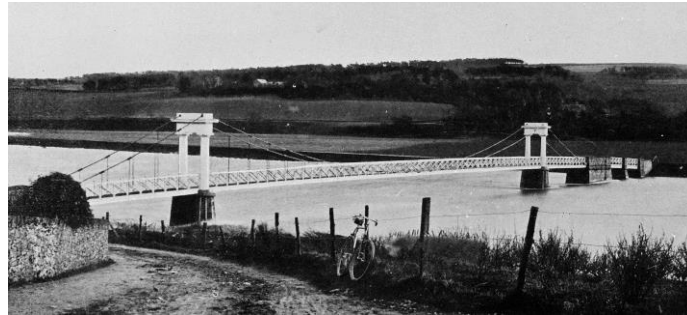




**The Shakkin' Briggie: A Heritage Project**  
**A viewing point, bench and information board**

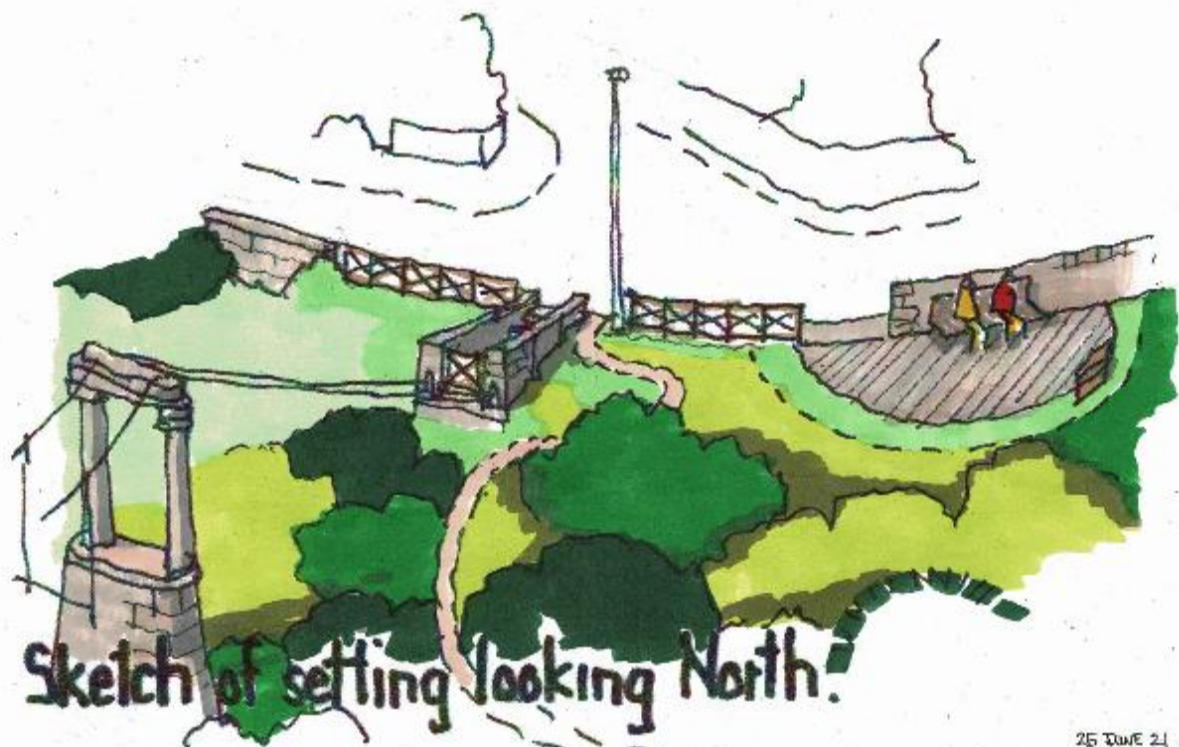


*The fully intact bridge.*

*Image courtesy of Aberdeen City Libraries/The Silver City Vault*

The bridge, opened in 1837, was funded by the Rev. Dr. George Morison, minister at the Banchory-Devenick Church, to enable his parishioners on the north bank more easily to attend the church on the south bank. Over the years the bridge has been damaged by floodwaters and from 1955 onwards the river shifted its course and the southern approach span was swept away. In 1984 the decking was removed as a safety precaution and the bridge is now derelict. A separate article gives further historical information.

The bridge is a Category B listed structure and there have been a number of reviews over the years to see if the bridge could be restored or moved to another location. Restoration would be a multi-million-pound project and the Cults Bieldside and Milltimber Community Council concluded in 2018 that such a project was not feasible at this stage and that the immediate focus should be on clearing the area around the north end, installing an information board and providing a viewing area.

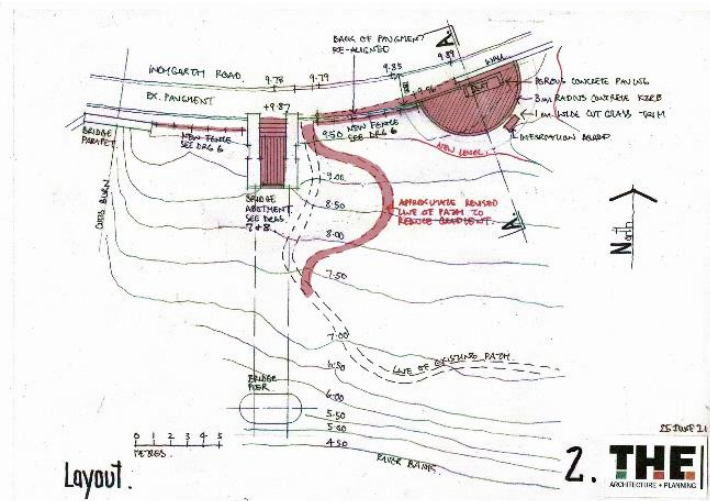


Sketch of setting looking North.

25 JUNE 21

Scottish Water own the land on the north bank and a letter of agreement has been agreed with them. The ground was cleared of gorse, broom and other vegetation by Tivoli, Scottish Water’s contractors, on a good will basis, and a topographical survey was carried out by Cameron + Ross on a pro bono basis.

THE Architects and Planning, also on pro bono basis, developed various designs and acted for the Community Council in preparing and submitting application for planning permission to the City Council. The Community Council settled on a simple semi-circular terrace with views up and down the river as well as of the bridge itself - as shown in the sketches. The terrace is wheelchair accessible and have a bench and information board. The area between the abutments has been opened up to provide another small viewing point, new fencing installed and the path to the river re-aligned to reduce the gradient.



The site is located within the Pitfodels Conservation Area and the aim has been to preserve the character of the area. The materials are of a high quality. The terrace is paved with granite setts. The height of the terrace is such that it is high enough above the river to avoid all but the worst flooding.

A planning application was submitted to Aberdeen City Council and Detailed Planning Permission and also Listed Building Consent was granted in 2021

CHAP kindly provided, on no fee basis, estimated costings and this allowed the Community to obtain several grants. The Community is extremely appreciative for project funding from:

- Aberdeen City Heritage Trust
- Aberdeen City Council (Common Good Fund)
- Scottish Water
- Shell

The construction work was undertaken by W M Donald as part of their apprenticeship scheme and it is making no charge for the involvement of its staff.

A section of the balustrade from the 1937 repairs is mounted on the wall adjacent to the bench.

There is a commemorative plaque to Colin Caldwell. Colin was a Community Councillor who sadly passed away in 2020. He was involved in a major previous review at the turn of the century and initiated the current project.



*Courtesy of Museums, ACC*

The Community Council would like to thank Scottish Water for their co-operation and all those who have contributed to the project, by providing their professional services free or by awarding funding:



Aberdeen City  
Heritage trust



Scottish Water



WM Donald



Aberdeen City  
Council



The Architects  
and planning



CHAP



Cameron+Ross



Shell



Tivoli

*Heritage Group  
Cults, Bieldside and Milltimber Community Council*