

milltimber - bielside - cults

NEWS

# mloc

Issue 150  
Feb - Mar - Apr 2011



Kippie Lodge Charity  
PRO-CEL-AM  
& Gala Dinner  
in partnership with

**APEX**  
TUBULARS

Pro-Cel-Am Golf Tournament  
& Gala Dinner at Kippie Lodge  
Saturday 30th July 2011

For details contact  
Catriona Allan (01224) 734747

Beneficiaries

**Sparks**  
THE CHILDREN'S MEDICAL  
RESEARCH CHARITY

**CLAN**  
CHILDREN'S HOSPITAL

## Editorial

Bad weather has brought out the best and the worst in our local communities. Abandoned by the council and its invisible road clearing apparatus, neighbours and families have gone out in the streets with their shovels and salt and done their best to clear the streets and pavements. Unfortunately the snow was too great this time and defeated us all, but the exercise and community spirit at least gave us all a healthy glow!

However, a reader complained that some pavements became impassable as people piled up the snow from their drives. Baillieswells Road was blocked by people parking their cars overnight because the side roads remained uncleared. Had a snow plough appeared (don't laugh) it would not have been able to get past anyway. Selfish actions the reader complains, but perhaps understandable for people who have to get to work.

At the national level it has been shocking to see the total collapse of the transport infrastructure; the closure of airports, the cancellation of trains, impassable motorways. So many people's holiday season was not as good as it should have been. It is time we had proper solutions so that our services continue to work come snow or fog.

At the local level for weeks I could not get out of my lethally icy street to drive to Westhill for a swim. Why do I have to drive so far for a swim? Because the local pool at Cults so-called community centre - to which I could have walked or perhaps slid - is still not open to the community.

Written in icy January.

Maureen

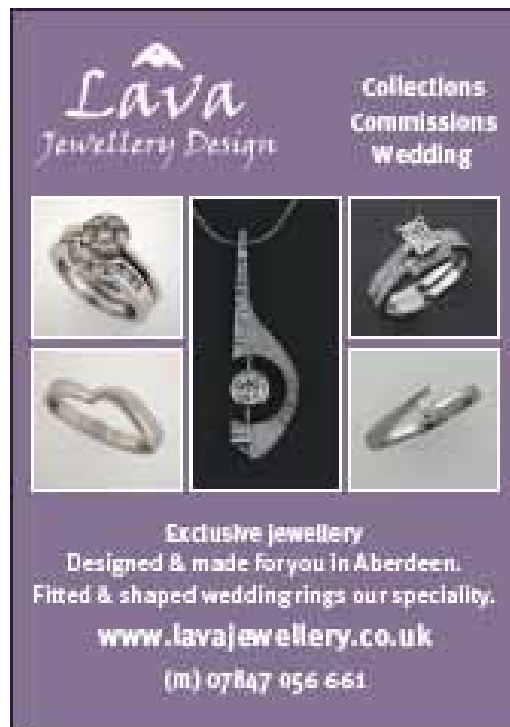
## Letters ...

Dear Sirs,

We have heard so much about the cut backs and how they are affecting the local community, the arts, students and the poor. Yet no-one has come up with the most obvious suggestion for saving money – fewer city councillors. How can an area the size covered by MBC News and the Peterculter Courier possibly justify having **three** councillors? It cannot have escaped your readers' attention that they all write nearly identical reports each issue of MBC News. And it is obviously stuff that could easily be done by one councillor – and indeed was done by just one in the old days – enabling savings to be made. I understand from the Council's own website that Aileen Malone, Alan Milne and Marie Boulton were paid over £55,000 last year and received expenses (for car, telephone etc.) of a further £5000. Reducing them by two would probably save the council £40,000 a year – money which could be spent on keeping the streets free of ice, snow and potholes.

Yours sincerely,

Cults Resident



Lava  
Jewellery Design

Collections  
Commissions  
Wedding

Exclusive Jewellery  
Designed & made for you in Aberdeen.  
Fitted & shaped wedding rings our speciality.

[www.lavajewellery.co.uk](http://www.lavajewellery.co.uk)  
(m) 07847 056 661

## Please don't grumble at us!

Please get writing if you want the newsletter to be a more interesting read. The deadline for the next editions is:

**1<sup>st</sup> April 2011 for May distribution**

Send your copy as an email attachment and keep photos separate to: [mbcnews@cbmcommunity.org.uk](mailto:mbcnews@cbmcommunity.org.uk)

Or you can post items in one of our boxes at Cults Library, Morning Noon and Night in Bieldside or Kelly of Cults.

### Contact details for MBC News team

861957 Editor (Maureen)  
 869502 Advertising (Tracey)  
 867571 Accounts (Phillip)  
 862262 Clubs etc. (Eleanor)  
 318561 Layout (Sue)  
 868725 Distribution (Peter)

## THE CHIMNEY SWEEP

- ✦ Open Fires, Agas, Wood Burning Stoves Swept
- ✦ Thorough Inspection, Sweep & Vacuum
- ✦ Bird Nest Removal & Bird-Guards Fitted
- ✦ Chimney Caps, Cows & Rain Tops
- ✦ Friendly, Helpful & Reliable Service
- ✦ Clean & Tidy
- ✦ Fully Insured



**PLEASE CALL 01224 864448**

# The Pothole, 'C.O.B.R.A.' and Health and Safety.

I am a pothole.

Previously in this occasional column, I have explained what it means to be a pothole and how we feel when we are encouraged to multiply and grow by the kindness shown to us by your local and national leaders.

This short article is intended to tell you all about our 'umbrella' organisation, 'C.O.B.R.A.' and its important work. (I understand that there are others who have recently tried to claim this acronym for their own purposes, but we were (excluding the snake) the first).

Many years ago, a number of like-minded modern phenomena i.e. potholes, 'leaves on the line', 'wrong type of snow', modern train designs etc., decided to get together to pool their resources and 'refocus' their existences in such a way as to become even more effective.

Our Mission Statement (all very 'modern' we think you will agree), is:-

**"An organisation to promote the things which make human life a little harder and unpleasant which could be fixed fairly easily if anyone out there with an ounce (or is it a 'gram'?) of common sense, could get their act together."**

Our name comes from:-

**Chaos  
Organised  
By  
Real  
Anarchists**



Since the formation of COBRA, our success in niggling humankind has surprised us. Ourselves, the 'leaves', the 'snow' and 'the designs' are all in the 'Transport' section. My 'snowy' colleagues have had a great deal of recent success in the fields of human education and postal delivery. In both these cases, they have ensured that there is very little of either. The 'designs' have had exceptional success all over Europe recently. Well done 'designs'. (On a slightly more serious note, we at COBRA are a little concerned that some Scandinavian authorities have decided to get their old rolling stock out from museums etc. in order to keep their trains moving. We are monitoring this significant

development with some understandable apprehension.)

However, COBRA's finest achievement to date is undoubtedly 'Health and Safety'. Our Executive felt it was vital to have a concept which would be so all pervading that it would stop humans from having any fun and also prevent them from dealing with 'leaves', 'snow', potholes, etc. Then one day one of my 'differently depthed' friends came up with the invention of 'Health and Safety'. It really was a true stroke of genius. We now had a system where actual repairs would take less than 10% of the time that would be needed to set up the 'risk area', before a repair could take place!

I came up with 'risk assessments' (for which I received an award – a 'Snakey'). Given humans' view of the importance of the written word (they are obsessed by these), I suggested that they could write very long and tedious 'risk assessments' (by self important 'health and safety officers') which no-one would actually ever read. With a bit of luck, so I argued, once they had over-analysed all the 'risks', they would end up deciding to do nothing because of 'Health and Safety'. I do not need to tell anyone what a huge success this has been. Repairs are left undone, transport fails to move, children remain uneducated and overdesigned trains can't pass their risk assessments at temperatures of less than -5C.

Here at COBRA, we are very hopeful indeed that this generation of human children will be so 'risk averse' that the whole pothole, 'leaves' and 'snow' fraternity will remain entirely unmolested in future as the next generation of rotund youngsters sit in their 'safe rooms' wondering what to do. Our work will have been done.

COBRA's real strength lies in the fact that the humans are slowly and surely losing their common sense and grip on reality. They design trains which cannot operate in cold weather and do not put ploughs onto the road until the snow goes off! None of this is really the fault of the humans who do the work, rather it is those people who do none of the actual transporting and teaching, but (and this is a peculiarity of human society) are chosen to organise these things!

We potholes are far more democratic and sensible, I feel.

My great granddad, who was a major pothole in his day, told me before he was filled in for the 25<sup>th</sup> and final time (by a proper group of actual road menders and not a silly machine that does not work), that in the past humans just seemed to do a lot better than they do these days. That is great news for potholes, the 'wrong' type of snow, 'leaves', 'designs' and all 'COBRA' members everywhere.

IFMcL

## CULTS PLAYGROUP OPEN WEEK

The Outreach Centre, 404 North Deeside Road, Cults

**21st-25th February 2011**

**10am-11.30am**

Cults Playgroup provides a friendly, caring and stimulating environment for children aged 2-1/2 – 5 years. We're opening our doors during the week of 21st-25th February to parents/carers and their children who would like to find out more about Cults Playgroup and the service we offer. Please feel free to drop in and take a look around, we look forward to meeting you!

## After School Football - Session 2010-2011

### Airyhall Classes

Booking for football starting in August.

Wednesday	Thursday	Thursday
1.30-2.00 Pre School	9.30-10.00 Pre School	3.30-4.15 P1/2
2.00-2.30 Pre School	1.30-2.00 Pre School	4.15-5.00 P1/2
3.30-4.15 P1/2	2.00-2.30 Pre School	5.00-5.45 P2/3
4.15-5.00 P1/2		

### Kingswell Classes Tel : Alison McLeod - 314669

Monday	Tuesday	Friday
1.00-1.30 Tiny Tots	2.30-3.00 Pre-School	9.30-10.00 Pre-School
1.30-2.00 Pre-School	3.30-4.15 P1-2	10.00-10.30 Tiny Tots
2.00-2.30 Pre-School	4.15-5.00 P1-2	1.30-2.00 Pre-School
3.30-4.15 P1-2		2.00-2.45 Pre-School+

[www.aberdeenfootballfun.co.uk](http://www.aberdeenfootballfun.co.uk)

## Jacqueline Zuurendonk

BSc, MCSP

### CHARTERED PHYSIOTHERAPIST

Sport Physiotherapy  
Back-Neck Injuries  
Cranial Sacral Therapy

Telephone : 01224 - 865690

## The Oven Valet Oven Cleaners

Doing the jobs you hate!  
Bringing the sparkle back  
to your oven using non  
toxic, non caustic products in your home.



01330 823079 07920483233

[www.theovenalet.com](http://www.theovenalet.com)

[Theovenalet@aol.com](mailto:Theovenalet@aol.com)



## QUALIFIED CHIROPODIST/PODIATRIST

\*\*\*\*\*

*Yvonne M. Thomson*

MSSCh. MCChA.

H.P.C. Registered

\*\*\*\*\*

Home Visiting Practice  
Est 1998

New Patients Welcome

Tel : 01224 - 869509

MEMBER OF THE BRITISH CHIROPODY AND PODIATRY ASSOCIATION

## WINE RAKS

1 Urquhart Road, Aberdeen AB24 5LU Tel. 01224 830496



### OPEN

Mon-Thurs 11am-9pm  
& Fri-Sat 10am-10pm

[www.wineraks.com](http://www.wineraks.com)

Online secure website  
shopping in the comfort of  
your own home.

**SIMPLY THE BEST!**

**WINE RAKS** - the Fine wine,  
Vintage Port and top whisky specialist,  
as you may know them if you had the  
pleasure of dealing with them - have  
re-located to their purpose built wine  
cellars to house their range of fine  
wines at the above address and are  
offering the very same high quality  
range of products and personal  
service that used to be available from  
their former location at 21 Springfield  
Road, Aberdeen.



## JUST GEMS

Diamonds & coloured gemstones in fine jewellery

- ◆ Rare and unusual gemstones a speciality
- ◆ Unique and exceptional quality jewellery
- ◆ Commissions welcome

Find us at the Falls of Feugh Restaurant,  
Banchory or by appointment

07732 835704

[www.just-gems.co.uk](http://www.just-gems.co.uk) [info@just-gems.co.uk](mailto:info@just-gems.co.uk)



Member of  
Gemological Association and  
Gem Trading Laboratory of Great  
Britain

Playgroup Rising 5's  
2's Group Parent & Toddler's

[www.milltimberplaygroup.org](http://www.milltimberplaygroup.org)

friendly environment qualified staff lunch hour option

Milltimber playgroup and preschool  
@ Milltimber Community Hall  
Lyndsay Hay - 07519 902 470 email :  
[milltimberplaygroup@hotmail.com](mailto:milltimberplaygroup@hotmail.com)  
Registered Charity SC010828



## Dog Walking and Pet Sitting Service

If your pet is a VIP to you  
They are a VIP to me too!!

Call Lorraine on

01224 - 734 130 or 07878 542 284

# News from the Cults Bielside and Milltimber Community Council

## Local Development Plan

The Community Council made its submission to the Aberdeen City Council on the Local Development Plan at the end of December 2010. It followed the attendance of the City Planners at our meeting on the 24<sup>th</sup> November. If you would like to read our submission, you can find it on the CBMCC website [www.cbmcommunity.org.uk](http://www.cbmcommunity.org.uk) under planning sub group/Local and Structure Plans. We have also put a copy on the noticeboard outside Cults Library. The deadline for submissions was extended to 17<sup>th</sup> January 2011 and we hope local residents will have taken the opportunity to express their views. There will be a further discussion by the full city council on the LDP in February 2011 to review the outcome of the feedback from the consultation. We will endeavour to keep you informed about progress on the LDP through 2011 via the MBC News.

In a previous article I mentioned that a deputation of the Aberdeen Community Council Forum was denied the opportunity to express their concerns about the robustness of the LDP at the full council meeting on 18<sup>th</sup> August 2011. Subsequently John Stewart, leader of the council (Lib Dem) and Kevin Stewart, deputy leader of the council (SNP) declined the invitation to attend the ACCF meeting on 6<sup>th</sup> December to discuss the concerns being raised.

## AWPR

Three parties have applied for a judicial review of the decision to proceed with the AWPR along the proposed route. In December 2010 an application was made for a protective cost order. The purpose was to minimise the financial exposure of the litigants in the event of losing the case against the Scottish Government. For those of you that are not aware, a Court can grant a PCO where it is persuaded that the litigant has limited financial means and when, were it not for the PCO, the litigant would not take the action. A judge can set a cap on the amount of costs to be paid. The outcome of the hearing in the Outer House of the Court of Session in Edinburgh was expected in early January 2011.

The main substance of the legal challenge will be heard in the Court of Session February 22-28<sup>th</sup> 2011. The litigant's case centres primarily on the restricted terms of the public inquiry and the failure of the Minister in making his decision to have appropriate regard to the acknowledged level of environmental damage that the scheme would cause.

## Topics for Future Community Council Meetings

In 2010 we invited officials from the Aberdeen City Council to attend our meetings to discuss waste management, including fortnightly bin collections, the condition of the roads and the local development plan. We felt that these sessions were successful with follow up articles in the MBC News. We are keen to continue these in 2011. We have invited council officials to attend our January meeting to discuss the Aberdeen City Council budget cuts and in March/April we hope to get the Head of the Planning Gain Team to talk about the negotiating process for the master plans included in the local development plan. We hope to advertise these events but we have limited financial resources. Please look out for details of these meetings at Kellys of Cults, Cults Library and the community noticeboard in Milltimber.

If you have topics that you think the Community Council should be covering please let us know by contacting myself or Guus Glass CBMCC Secretary.

Peter Reiss - Chairman



## Community Council Members

### Contact Details

Peter Reiss (Chair)	734592
Guus Glass (Secretary)	864925
Graham Payne (Treasurer)	868827
Christine McKay (Planning Lead)	867479
Eleanor Brennan	862262
Gillian Buchanan	865125
John Etchells	867235
Martin Harris	864436
Harriet North-Lewis	864436
Andy Pyle	868060
Anne Rae	864646
Derek Robb	868797
Nigel Williams	862639

**Email: [cbmcc@cbmcommunity.org.uk](mailto:cbmcc@cbmcommunity.org.uk)**

Other useful contact details

- Cllr Marie Boulton 522178 / 734712
- Cllr Aileen Malone 522356 / 862189
- Cllr Alan Milne 523148 / 867816
- Police (non emergencies) - 0845 600 5700

### Upcoming CBMCC Meetings

24 March - Cults Academy

28 April - Deeside Christian Fellowship Church, Milltimber

26 May - Cults Academy

**All meetings are 7pm – 9pm  
All are welcome to attend**



Photo : Paul Barlow



Aberdeen Waldorf School  
*Inspiring achievement*

## Kindergarten

Aged 3 to 6 years  
Monday - Friday  
8:30 - 12:30



Aberdeen Waldorf School Craigton Road Aberdeen AB15 9QD Tel: 01224 868 366  
[www.aberdeenwaldorf.co.uk](http://www.aberdeenwaldorf.co.uk)

# Phil Smart Electrician

All Domestic & Commercial  
Electrical Work  
From A Replacement Socket To  
A Full Rewire

Replacement Fusebox Specialist  
Periodic Inspection & Testing  
Portable Appliance Testing

Friendly Personal Service  
07769 668671  
01224 864103

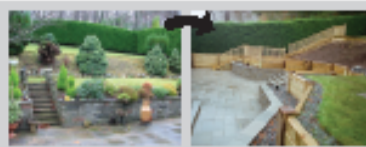
39 Bailieswells Crescent, Bieldside, Aberdeen, AB15 9ED  
email: [philsmart@gmail.com](mailto:philsmart@gmail.com)



## Anson Mackay Garden Structures

Create the perfect  
outdoor space and re-claim your garden

Before After



• Decks  
Extend your  
living space  
with single or  
multi-level decks

• Patios  
Stunning Sandstones

• Timber &  
Stone Walls

• Fences & Gates  
plus a complete FREE  
consultation package

Tel: 01224 790021

[info@ansonmackay.co.uk](mailto:info@ansonmackay.co.uk)

*Do it once,  
do it right!*



# PETALS

OF PETERCULTER  
Flowers for all occasions

- Gift Bouquets
- Weddings & Celebrations
- Corporate Contracts
- Reception Vases
- Openings & Events
- Funerals
- Deliveries

299 North Duesdale Road,  
Peterculter, AB14 0LJ

Tel. & Fax 01224 733222

Part of our skills of Garden Services Supply



# News from Marie Boulton & Alan Milne

December 2010 saw heavy snowfall and freezing temperatures which has brought its challenges for the public, the private sector and council roads teams. The freezing temperatures and snowy conditions have stretched councils all over the UK in terms of manpower, equipment and of course, salt and grit. Aberdeen City Council has had teams working 14 hour days trying to keep roads and pavements clear and safe, being more successful in some areas than others. A particular challenge that the road team faced were people parking on side roads, which we know sometimes can't be avoided but making it very difficult for the snow ploughs to clear the streets and allow the gritters to spread sand and salt.

The grit boxes, which are available throughout the city for use by the general public, have been constantly refilled but do at times empty. Should the box near you become empty, please do call 0845 608 0919, to get it refilled. Unfortunately, certain individuals obviously "believed" their need for the grit bins was greater than everyone else's and resorted to stealing them from areas across the city, with little regard for the safety implications of others. New grit bins had been ordered for sites where it was deemed necessary; now some of those bins will have to replace the stolen ones. Hopefully, tight budgets will allow for additional bins to be ordered for the identified new sites.

Due to the adverse weather conditions, the time available for responses to the 'Local Development Plan' was extended, until the 17<sup>th</sup> January 2011. The weather may have made it difficult for some people to hand deliver their responses as the Postal Service was of course experiencing disruption. For further information on the Local Development Plan please go to the to Aberdeen City Council's website at

[www.aberdeencity.gov.uk/localdevelopmentplan](http://www.aberdeencity.gov.uk/localdevelopmentplan)

In our last article, we were happy to report that at the August 2010 Council Meeting we had seen agreement that Loirsbank should be returned to Greenbelt status in the approved draft Local Development Plan. Unfortunately because that draft Local Development Plan is still under consultation the developer put in a planning application based on the 2008 Local Development Plan which is the current working plan. The Planning officers recommended the application for refusal given it conflicted with the decision taken at full Council but the Councillors on the Planning Committee chose to approve the application, which was extremely disappointing.

Cults Academy is still struggling to accommodate 'in zone' pupils in S2, S3 and S4 but we are working with the Education Director and Placement Officers to try and resolve the situation and meet the needs of the local children. The Parents' Charter allows parents to apply for their children to go to schools outwith their catchment areas. The Local Authority has no option but to give places to 'out of zone' pupils if spaces are available at the requested school. Currently, Cults Academy has a total of around 70 'out of zone' children for various reasons. These reasons can include (1) the simple 'Parents Charter placing request' as above or (2) where a child's parents have moved out of the area midway through their child's education and opt not to switch schools. It is important to consider that once a child has been given a place at their chosen school, the Local Authority cannot remove them unless it is for disciplinary reasons, and even then it is extremely difficult to remove them permanently.

The Council is presently trying to produce a balanced budget for the coming financial year which is proving very painful, across the board. We are seeing suggested cuts to Additional Support Need teachers, Pupil Support Assistants, reorganising of the music service, the list goes on, across every area of the Council. We will bring you an update in our next article.

Finally, it is with great pleasure we can confirm Valerie Watts has been appointed as the new Chief Executive for Aberdeen City Council. Valerie, who is currently Town Clerk and Chief Executive of Derry City

Council, will bring a wealth of experience to the post, having worked in local government since 1989 and prior to that in the health service in Northern Ireland since 1983. Valerie will take up her post in late February/early March 2011.

Marie Boulton - Independent

Alan Milne - Conservative



oooOooo

## News from Councillor Aileen Malone

### Grit Bins in Our Area

Over the past few weeks the severe winter weather has been very tough for most of us. I received requests for additional grit bins around our area and have been trying to ensure that bins are placed where needed. I have also been keen to make sure the contents have been topped up.

The relevant Council officials have told me that all requests are assessed and the most needy locations prioritised. They consider the most suitable positions of existing bins and check on usage. Bins with low usage are likely to be moved to a more appropriate location.

There are approximately 900 grit bins across the City. In the winter, they take a considerable amount of time and grit to keep them filled. They are important for residents to use as required. Spreading the grit helps to keep the traffic and the public moving.

Unfortunately, grit boxes have been stolen in recent weeks. These incidents are reported to the police. Some might think they have a genuine legitimate reason for moving a grit bin. Missing grit bins are expensive to replace and their removal is also inconvenient in inclement weather for users. If you happen to see a grit box that has "walked" can you please contact me or the police.

### Cults Swimming Pool - a Facility for Local People

As reported in my previous article the delay in moving forward with the Public Swimming Sessions at Cults Pool has been very frustrating. It has been a real inconvenience to swimmers not to have access to the pool. I have been following up all complaints and I am trying to get the pool made available to the public. Council officials have a site meeting with Sport Aberdeen on 20th January. This is to finalise arrangements and to confirm the start date.

Hopefully by the time you read this article the 'pilot' arrangements will be in place. The service will be monitored to gauge the levels of local use and demand. I am looking forward to being able to realise this wonderful new facility which I hope will be well used.

### Road safety in our community

From time to time I hear complaints about hazardous parking and driving in various streets in our community. The main areas of concern are around the shopping area in North Deeside Road, Kirkbrae, St Devenicks. Most of us use these businesses and value them very much. The area is a particular focus of activity with many people walking about. I always follow up every issue raised with me; the Police deal with road safety issues, city wardens with parking infringements and other anti social issues. Problems can be reported directly. City Wardens are on 653310. Email: [citywardens@aberdeencity.gov.uk](mailto:citywardens@aberdeencity.gov.uk)

contd pg 8

with **you**  
every step of the way



579 North Denside Road, Cally, Aberdeen AB15 9EX  
Tel: 01224 808887

Balkeilor Road, Maryton AB24 6HN  
Tel: 01224 876666

14 Cordale Place, Aberdeen AB10 1UR  
Tel: 01224 688858

[www.mackinnons.com](http://www.mackinnons.com)

**mackinnons**  
solicitors



Magdalen Road • Terry • Aberdeen  
Tel: 01224 517341 • Fax: 01224 517488  
E-Mail: [timber@cordiners.com](mailto:timber@cordiners.com)

**FENCING & DECKING  
COMPREHENSIVE RANGE  
AVAILABLE FROM STOCK**

[www.cordiners.com](http://www.cordiners.com)



# ABERDEEN AESTHETICS

By Vissan

Treating Facial Lines and Wrinkles

Facial Rejuvenation

Restylane

Skin Care

For a consultation with fully qualified  
Medical Practitioners please contact :

*Oria*

85 North Denside Road

Rockliffe

Tel : 864444

*Beauty Uncovered*

981a North Denside Road

Aberdeen AB15 9EX

Tel: 869882

*Intelligent Cosmeceutology*

15 Bridge Street

Beauly

Tel : 01330 820864

## St Devenick's Playgroup



### Bielside

Established for over 30 years

Member of the Scottish Pre-School Play Association

In Partnership with Aberdeen City Council

Monday – Friday 9.20am – 11.50am

2½ to 5 years

(not required to be potty trained)

Friendly, Qualified Staff,

Funded and Non-Funded Places Available

Healthy Eating Policy, Outside Play Area and Garden

Lunchtime Club – Wednesday 11.50am to 1.00pm

Rising Fives - Tuesday and Thursday 12.30pm to 3.00pm

with Rising Fives Lunchtime Club from 12.00pm

Tots and Toddlers – Wednesday 2.00pm to 4.00pm

Playgroup 07931 223545 or Lyndsay 07923 512633

<http://beehive.thisisnorthscotland.co.uk/stdevenicksplaygroup>

### The Council's Budget Process

The Council is working hard to meet its legal obligations to balance its budget. We have less to spend than all other local authorities so it is a tough process requiring tough decisions. The approach adopted is 'Priority Based' or 'Zero Based' budgeting. This system means that the Council is costing ALL the services that it supplies and ascertaining what is a Statutory Responsibility, and what is discretionary. As the Council that has been the lowest funded for some time, our task in matching income to expenditure is made all the more difficult. Needs and demands on public services are constantly rising so there are growing pressures on the public sector. To meet these needs and demands, the Council is costing the services that it legally has to provide. It can then prioritise what can be afforded with the funds that remain.

There are no easy options. The financial circumstances are difficult. Some very worthwhile and well loved services cannot be continued, but I and my colleagues are trying to ensure that the services that are of most value to individuals and communities are maintained as far as possible. The final decisions on all budget proposals will be made on February 10th. This is not an easy time. None of the decisions taken will rest easy.



As always, if you need to get in touch with me regarding any issues, please contact me at ...

Councillor Aileen Malone  
Town House  
Broad Street  
Aberdeen AB10 1FY

Direct Dial: 522356  
Home: 862189  
Email:  
amalone@aberdeencity.gov.uk

## National Spring Clean, Scotland

14<sup>th</sup> March – 16<sup>th</sup> May 2011

Scotland's biggest annual clean up is back! And due to popular demand, the campaign period has been extended from one month to two, making it even easier to take part. Register your litter picks on the Keep Scotland Tidy website:  
<http://springclean.keepsotlandtidy.org/register.asp>.

When you register a clean-up as part of the National Spring Clean, you will be sent a **FREE Clean Up Kit** to help you get started. The Kit includes a Clean Up Information Pack to help plan your activities, containing:

- Organiser Checklist
- Staying Safe Factsheet
- Council Contacts List
- Feedback Form
- An A3 poster to promote your event
- Details of special offers and competitions.



The Kit also includes:

- Protective tabards for participants
- A supply of black bin bags for litter
- Clear bags for recyclables
- "I'm helping to Keep Scotland Tidy" stickers for children

Come on you community conscious people. Get cleaning!

## Local Bus Service under threat!

Service 93 – Broad Street – Peterculter was introduced in July 2009

to replace service 24 when this was withdrawn from commercial operation by First Aberdeen. This service provides a lifeline to people who are remote to the main bus services in Kaimhill, Garthdee, Cults, Bielside and Peterculter.



This is a good example of a Local Authority supported service operating in an area where there is a strong social need for the service. Due to the long, circuitous nature of the route required to access the areas in question, the operating costs are always going to be quite high. This, combined with low anticipated passenger numbers is likely to preclude such a service ever operating on a fully commercial basis.

Without this service, a large number of users, many less able people and/or residents of sheltered housing will be left completely isolated. The geography of a number of areas along this route means that the walk to alternative main line bus services is long and on some very steep gradients, meaning that this is not a viable option for anyone who is not fully able bodied. The distance from the major destinations results in a taxi journey being too expensive to be practical in all but emergency situations for many people.

The commercial service 24 which was operated by First Aberdeen was carrying approximately 50 passengers per day on four return journeys per day. Service 93 operates on three return journeys per day. Despite a reduced number of journeys Aberdeen City Council have managed to grow the patronage to an average of 55 passengers per day by ensuring that the service is well promoted and we have also input a strong focus on giving a high quality, dependable service. While this might not sound like a large increase, it does represent an increase in passengers per journey from 12.5 to 18.3 – a 46% increase. It is regrettable that a high level of hard work on the part of Aberdeen City Council and Stagecoach Bluebird which has made this service a success to be lost when the service ceases to operate.

This service is currently part-funded by funds secured through the Section 75 agreement for the extension of the Asda and Sainsbury's stores in Garthdee. As a result, this service shall be able to continue for approximately another ten months. We are currently in discussions with Stagecoach Bluebird who operate this service to see whether there is any scope for the service continuing on a commercial basis. As indicated above however, it is unlikely that this will be possible.

Should you require any further information, please contact your councillor or the Public Transport Unit at Aberdeen City Council tel. 08456 080910



# GRAMPIAN P.O.L.I.C.E

*Keeping our communities safe*

## News from your local police team

Firstly, your Local Policing Team would like to take this opportunity to wish you all a happy and very prosperous New Year.

2010 proved to be an eventful year for Grampian Police as on 1 April radical changes were introduced in respect of how operational policing is to be delivered across the city of Aberdeen.

A strong emphasis was placed on enhancing community style policing methods to ensure your local police teams are able to engage more openly with you, and that local issues which cause concerns within communities can be discussed, tackled and continually reviewed.

The most important element of this type of policing is the regular engagement between members of the public and their local officers, as the sharing of information can greatly assist us to jointly tackle local issues.

Over the past ten months or so positive results are being achieved across your community as a wealth of local intelligence is being built up by officers who will remain working in the Cults and surrounding areas.

Grampian Police can report that a number of vehicle related crimes have occurred in the Cults area which have involved items being stolen from insecure vehicle or vehicles themselves being stolen. From subsequent enquiries which were carried out, several well known offenders have been charged.

We would like to take this opportunity to request the assistance of all vehicles owners to take active steps to reduce opportunities for their vehicles to be targeted by checking they are locked and that any valuable items are removed.

It is pleasing to report that over the course of the year crime levels have remained relatively low with no identified crime series occurring. Obviously whilst we are delighted to report this, your local policing teams will be well aware of the dangers of becoming complacent in how we deliver our services and make the Cults area a hostile environment for criminals to operate in.

Our main aim remains to engage fully with all local residents and businesses so that we can gain an appreciation of what matters to you. By doing this we will be able to direct our staff to prioritise the problems and take active steps to rectify them.

Effective partnerships are continually being worked upon and Grampian Police gain additional benefits in combating all forms of criminality by working closely with City Wardens and all local Neighbourhood Watch Schemes as we all work to the same agenda of making sure that Cults, Milltimber and Beildside remain desirable places in which to live and work.

You are all encouraged to view the Grampian Police website for Aberdeen Division as this will provide you with an opportunity to gain an appreciation of your Local Policing Team and how to inform us of local issues. Go to [www.grampian.police.uk](http://www.grampian.police.uk). This takes you to the main Grampian Police website: select 'Your Area' - 'Aberdeen Division' - 'Local Policing Teams' before selecting the Hazlehead area. Alternatively, tel. 0845 600 5700.

HONEN CHEN  
 Joseph Ribbitt  
 BANDOLERA  
 steilmann  
 MEXX  
 Betty Barclay  
 moovy  
 PILGRIM  
 ESPRIMO  
 DENTS  
 Established 1977

papillon  
 373 North Dee side Road  
 Cults  
 Aberdeen  
 AB15 8SK  
 T 01224 80808  
 E info@papillonboutique.co.uk  
 W www.papillonboutique.co.uk

OPENING TIMES  
 Mon - Sat 9.30am - 5.00pm  
 Sunday CLOSED

# Grampian Decorative and Fine Arts Society

AN INVITATION: The first half of our exciting season of lectures has been very successful but there is still plenty of time to enjoy the remaining part of the programme. Please join us for one of our monthly meetings and if you enjoy it we would be delighted to welcome you as a member. We have an exciting and varied programme of lectures, study days, visits to art galleries and museums, plus visits to gardens and private houses often not open to members of the public. By joining us you will be sharing with others who enjoy the decorative and fine arts and who wish to learn more about them. No previous knowledge is needed – only enthusiasm! The current programme is detailed below. Do come along – you'll be made most welcome. Visitors are invited to make a donation of £5.00

## 2011

- 9 Feb Discoveries of Scotland : Painters and Other Visitors 1700-1900
- 9 Mar The End of a Tradition : The Art of Auguste Rodin (1840-1917)
- 13 Apr Laos: Historic Buddhist Temples to Modern Silk Weaving
- 11 May "Pilgrims of Babylon" The Artists of Montmartre
- 8 Jun Transports of Delight : The Art of the Travel Poster of the 1930's

The venue is Robert Gordon's University, The Faculty of Health & Social Care, Scott Cassie Circle, Inchgarth Road. Please join us for a glass of wine or a soft drink at 7.00 prior to the lecture which starts at 7.30. For more information please ring Alison on 01224-869639 or Thyra on 01224-481278



Cults Academy Social and Fundraising Committee  
invite you to join us for a

# Ceilidh

Friday, 4<sup>th</sup> March 2011  
7:30pm to midnight

Hilton Aberdeen Treetops

performing band

## Clachan Yell

Casual Dress

Tickets £17.00

incl. stovies, bar,  
tea and coffee

Phone Cults Academy School Office on **01224 868801**

**Raffle to be held with great prizes!**

# GARDENERS FORUM

An evening with Jim McColl (of TV's Beechgrove Garden),  
Fellow panellists Colin Stirling and Chris Wardle

To be held on **Thursday 10th March, 2011 at 7.30p.m.**  
In Camphill Hall, Camphill School, Murtle Estate, Milltimber

Car parking available : turn off N. Deeside Road just East of the Water Wheel

Light refreshments at interval  
Bring your gardening questions to put to the panel

**TICKETS £12.00 from Simeon (Tel. 862415)**  
**Or E-mail:- info@simeoncare.org.uk**  
**Or at Blue Door, North Deeside Road, Bieldside**  
PROCEEDS IN AID OF SIMEON CARE FOR THE ELDERLY



## 65<sup>TH</sup> ABERDEEN (MILLTIMBER) SCOUTS

**ANNUAL JUMBLE SALE**  
AT CULTS ACADEMY  
SAT, MARCH 26<sup>TH</sup> 2011  
1PM – 3.30PM  
ADMISSION £1 – CONCESSIONS 50P

TOYS, CLOTHES, BOOKS,  
BIKES, BRIC-A-BRAC, SOFT  
FURNISHINGS ETC.

Everyone welcome to come and grab  
a bargain!!

## 65<sup>TH</sup> ABERDEEN (MILLTIMBER) SCOUTS ANNUAL JUMBLE SALE COLLECTION DATES

WE WILL BE COLLECTING IN MILLTIMBER ON THE FOLLOWING DATES:-

**TUESDAY 22<sup>ND</sup> MARCH**  
**WEDNESDAY 23<sup>RD</sup> MARCH**  
AND IF NECESSARY CAN CALL  
BACK ON **FRIDAY 25<sup>TH</sup> MARCH**

FLIERS WILL BE PUT THROUGH YOUR  
DOOR NEARER THE  
TIME, BUT PLEASE  
POP THESE DATES IN  
YOUR DIARY NOW AND  
HAVE A POST XMAS  
CLEAR OUT!



## CHORES @ WORK

CARPET & UPHOLSTERY CLEANING SPECIALIST  
DOMESTIC & COMMERCIAL

CARPET & RUGS  
UPHOLSTERY  
SPOTS & STAIN REMOVAL  
ODOUR REMOVAL

CARPET PROTECTOR  
24 HOUR FLOOD CALL OUT  
TURBO DRYING SYSTEM

FOR A FREE ESTIMATE PLEASE CALL  
01651 873157  
07740149290  
25 Forsyth Drive Oldmeldrum AB510NW  
alan@choresatwork.co.uk  
www.choresatwork.co.uk



# KARATE-DO

NKF (National Karate Federation)

**Ronnie Watt 8th Dan**

Director & Chief Instructor  
45 years experience in Karate  
Member of the Combat Hall of Fame  
Aberdeen 2006 Sports Person of the Year  
Northsound Contribution to Sport Winner 2006

- Established 1966
- Members of a World Organisation
- Multi-Styles Organisation Shotokan & Wado-Ryu
- World Class Coaches & Referees
- World Gold Medalists (Adult & Children)
- Multi-Styles World Body Dan Gradings
- All Instructors are Fully Insured
- NVQ Centre of Excellence
- Opportunity to Compete at World Events
- World Class Courses
- Approved Standards
- Safe Friendly Atmosphere

All Black Belt and Federation Instructors teach  
under the guidance of Ronnie Watt 8th Dan,  
WKC Director of Shotokan Karate, NVQ Level 4

An easy, controlled way to fitness  
Be fit, healthy and safe

TRAIN WITH ONE OF THE  
WORLD'S TOP KARATE SCHOOLS

For Information and Class Details

Tel: (01224) 734607

e-mail: ronnie@nkf-karate.com  
www.nkf-karate.org / www.wkc-org.net



Dr Fritz Wendland



Thomas Schulze



Julian Green



Mrs T Ochi



Duwan Dack



Kureshita



Ken Wittstock



Paul Kew  
Some of the  
world's top instructors  
who have reached 4  
NKF courses



# MD

GARDEN SERVICES

Garden Design  
Treated Wood Fencing  
Grass Cutting Border Edging  
Shrub Pruning / Trimming  
Hedge Cutting  
Tree Work  
Turfing  
Landscaping  
Planting  
Bark / Chips Laid /Supplied  
Garden Clearance /Tidy Ups.

Liability Insured  
Competitive Rates  
Reliable  
& Friendly  
Free Estimates  
Private &  
Commercial

Mike Duffus  
Tel: 01224 732872  
Mobile: 07742 761 763

E-mail: mdgardenserv@btinternet.com

# News from St Devenick's Playgroup

This term we have been introducing more elements of the new Curriculum for Excellence into our daily routine. We now use a floorbook to help our planning – the children are invited to share their ideas of experiences they would like to explore, and our planning for activities grows from their contributions. This is one way we are developing 'child-at-the-centre' planning within playgroup. We also allow topics to grow from the little things that happen within playgroup so that the children's learning is centred on the experiences that spark their interest. For example, this term we developed a series of activities involving printing, which all began when a child noticed the marks of his footprints across the sandpit in the garden. We made more footprints, and then made patterns in the sand with tools. We took these ideas indoors and developed some craft activities: printing with paints



and making dough shapes and using them to print. On another day, we couldn't miss the opportunity the snow gave us to go outdoors and build a snowman of our own. This is the type of planning and topic-building we will be using within playgroup in the future. Who knows where the children's ideas will take us next term?

Each child now has a 'Learning Journey': a folder containing everything from photographs of the child at play to pieces of their art work, and observations made by the staff. Each parent and child has access to their own folder whenever they wish, and are invited to add to it details of achievements outside playgroup; maybe letting us know they climbed to the top of a climbing frame or including a certificate in something. Each child's keyworker works with the parent and child to make next steps and help the child develop further. These Learning Journeys will be something that the child can keep forever as a memento of their early years.

We are very pleased to be able to wish our Senior Playleader, Michelle, many congratulations on the birth of her third child, Joshua, who was born at the end of November.

On 28<sup>th</sup> November, in spite of deep snow, we held a Ceilidh at Milltimber Community Hall. We are grateful to all who came to the ceilidh and made it such a fun and successful evening, and to the Committee who worked hard to make it happen. Keep a look out for more information on our next fundraisers; we're planning a Quiz Night in February and a Race Night in June.

We are holding an Open Week from 24<sup>th</sup> to 28<sup>th</sup> January, which may well have passed by the time this magazine reaches your home. We hope to have welcomed lots of new families and shown them what our playgroup has to offer. If you have missed our Open Week, don't worry, as we are very happy to welcome visitors at any time. Please call Lyndsay on 07923 512633 to arrange a date for your visit.

We are based in the church hall at St Devenick's Church, Bielside. Playgroup sessions are 9.20 – 11.50, Monday to Friday. Rising Fives sessions are 12.30 – 3.00, Tuesday and Thursday. If you would like to find out more about Playgroup or Rising 5's, please call Playgroup on 07931 223545 or phone Lyndsay on 07923 512633. Our website address is <http://beehive.thisisnorthscotland.co.uk/stdevenicksplaygroup> and our email address is [stdevenicksplaygroup@googlemail.com](mailto:stdevenicksplaygroup@googlemail.com)



## St Devenick's Church Bielside

Find us on the main North Deeside Road at the corner of Baillieswells Road, by the traffic lights.

Everyone is welcome.

Our aim: to know God and to make him known.

### Children at St Devenick's:

Exploring God can be done in a very child friendly and fun way. Come and join us.

### Family Service:

1<sup>st</sup> Sunday at 10.30am and it only lasts 45 minutes. It is a service primarily for children and includes:

- lively music,
- stories,
- interactive activities,
- engaging talks
- and creative prayers.

If you are looking for a service that will engage your children then come along and see for yourself.

### Messy Church:

3<sup>rd</sup> Sunday from 3.30-4.45pm in our church hall.

- An hour of arts and crafts and other interactive activities
- around a theme or story from the bible followed by
- short time of singing, a closing story and a prayer.
- Snacks are available throughout.



### Junior Church:

is held every Sunday during term time at 10.30am for children below 12 and provides an hour of activities and stories from the bible in a warm and creative atmosphere while the adults are in their own service.

### Weekly worship

#### On Sundays

8.30am Holy Communion  
10.30am Main Sunday service  
1st Sunday of the month: All Age Service  
2nd and 4th Sunday of the month:  
Holy Communion  
3rd and 5th Sunday of the month:  
Morning Worship

**Crèche, Junior Church for ages 3 to 11 years, and Youth Church** for 11+ run at the same time as the main service on Sunday mornings.

#### On Thursdays

10.30 am Communion in the Lady Chapel

#### The Mix

For young people from Age 10 upwards  
On Saturday evenings in term times, except the last Saturday each month.

If you would like information about us or any of our activities, please contact

Paul 01224 861552 email [paul@stdevenicks.org.uk](mailto:paul@stdevenicks.org.uk);  
or the Church office (open Mon, Wed and Thurs mornings during school term),  
phone 01224 863574, email [office@stdevenicks.org.uk](mailto:office@stdevenicks.org.uk);  
or look on our website [www.stdevenicks.org.uk](http://www.stdevenicks.org.uk)

# Rae Brown & Co. Ltd.

JOINERS AND BUILDING CONTRACTORS

SINCE 1975

**Traditional Methods to  
Contemporary Living**  
**Kitchens, Doors, Windows,  
Roof Repairs, Plastering  
Extensions, Loft Conversions**

**Office & Workshops:**  
**Fairburn Terrace, Dyce,  
Aberdeen, AB21 7DR**  
**Tel: 01224 723420**  
**info@raebrown.co.uk**

**www.raebrown.co.uk**



Safety Scotland



Aberdeen Waldorf School

*Inspiring achievement*

## Parent and Toddlers

Birth to 3 years  
Monday - Thursday  
9.45 - 11.45

Friendly peaceful atmosphere  
Natural materials for craft and play  
Shared snack-time  
Songs and rhymes

All welcome



Aberdeen Waldorf School Craigton Road, Cults, Aberdeen. Tel: 01224 868366  
[www.aberdeenwaldorf.co.uk](http://www.aberdeenwaldorf.co.uk)

## HOME REPORT SCOTLAND

For all types of residential surveys & valuations.

CALL NOW FOR :

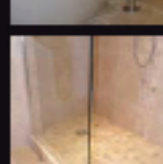
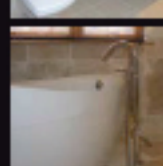
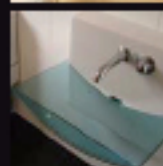
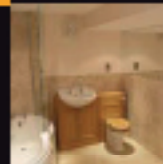
- 🏠 HOME REPORTS
- 🏠 MORTGAGE VALUATIONS
- 🏠 PRE - SALE SURVEYS
- 🏠 ESTATE VALUATIONS
- 🏠 ENERGY PERFORMANCE CERTIFICATES
- 🏠 RICS HOME BUYER REPORTS



1 Ashfield Road | Cults | Aberdeen | AB15 9NQ  
Tel/Fax: 01224 869705 | Mob: 07949 941078 | [allen.waite@homereportscotland.com](mailto:allen.waite@homereportscotland.com)

## cutting EDGE

Telephone: 01224 744911  
Email: [sales@cutting-edgetd.co.uk](mailto:sales@cutting-edgetd.co.uk)  
[www.cutting-edgetd.co.uk](http://www.cutting-edgetd.co.uk)



Cutting Edge... the ultimate bathroom and wetroom specialists in Aberdeen. We will transform your bathroom into a luxurious space of tranquility and relaxation. Re-designing or replacing your bathroom can seem like an impossible task, but we have the knowledge, expertise and skill to take your idea from a dream to reality.

We pride ourselves for our First Class Customer Service (pre and post installation), outstanding workmanship and attention to detail. We will offer you advice on a wide range of products, ensuring that your bathroom/ wetroom meets all your personal requirements including affordability. As part of our complete bathroom solution we can also provide under floor heating and entertainment for your bathroom including music systems and water proof plasmas.

# Community Learning & Development

## Adult Learning

Our new January - June 2011 programme of adult learning courses is currently running in various venues in your local area. Courses include Italian, Spanish, French, Computing, Beaded Jewellery, Digital Photography, Watercolour Painting and a range of general interest classes.

Why not consider an adult learning class when the new programme starts up again in September? It could just be for interest or to help you on the first step towards employment. Have a look at the current range to see what's typically on offer and you will hopefully be inspired to sign up for a course when we issue the new programme in August. The programme is offered by Aberdeen City Council in partnership with Aberdeen College Community and Lifelong Learning.

Call into Cults Community Centre or Cults & Culter Libraries to pick up a copy of the programme or contact the Adult Learning Co-ordinator, Alison May, on 01224 868858 or

email: [CultsAdultLearning@aberdeencity.gov.uk](mailto:CultsAdultLearning@aberdeencity.gov.uk)  
Information is also on our website,  
<http://beehive.thisisnorthscotland.co.uk/cultssc>

## Focus on local community organisations

### Cults and District WRI

Cults and District WRI began in 1928 when a Miss Tancerd with 34 other like minded ladies met together in each others houses. In 1932 they made plans to build their own hall in Kirk Brae, Cults with an interest free loan from Miss Tancerd. The first meeting in the New Hall, costing a princely £257 – 12p, was on the 6<sup>th</sup> July 1933. The official opening by Harry Gordon took place at a gypsy Fair in the grounds on 2<sup>nd</sup> August 1933 and raised £207. The debt was repaid by October 1934. Membership reached a peak of 110 in 1934 and is presently a healthy 50 or so.

Meetings are held on the first Thursday of each month except in July and August. This usually involves a talk or demonstration by a guest speaker covering a wide range of topics. Among the most popular topics are craft talks which have included in recent years patchwork and quilting, corn dollies, gift card and gift box making, wildlife painting, bead making and flower arranging. In many cases members have been encouraged to have a go themselves with varying degrees of success. Another favourite topic is history, especially local history. The many interesting talks covered included the history and folklore of the Denburn, histories of the Spital, March Stones, The Baillies of Bennachie and the Tivoli Theatre. Travel talks are always popular and have transported members through different countries on a bicycle, on visits to China and Tibet, and by foot across Yemen, all illustrated with beautiful slides and film. For the green fingered amongst us there have been talks on gardens in America, Aberdeen in Bloom, Lochalsh Winter Gardens and Castle Fraser Gardens. Health too has not been neglected with talks on the work of a GP, Tai Chi, when members were encouraged to participate and on the Well Woman. Talks by speakers from charity organisations have enabled members to contribute a little to groups such as the Archie Foundation, Chest Heart and Stroke Association, and Kids Action.

Each year there are one or two special evenings when guests are invited such as a Burns Night with the usual recitations and speeches and of course a haggis. A Stovie night, with food provided by outside caterers is also very well attended. Singing groups and musicians have also provided quite a few enjoyable evenings.

Fund raising nights have included two very well attended fashion shows with refreshments provided. At Christmas there is a party and in November a group party hosted by other local WRI groups.

Other group events include a Bulb and Craft Show in March to which members are invited to contribute a craft table showing the skills of the different groups in knitting, baking, sewing and handcrafts. A prize is awarded for the best. There are also individual prizes for bulb growing, baking, knitting, sewing and photography. Each month members are able to exercise their own skills with a craft competition. Again this includes baking, jam making, cooking, knitting, toy making etc. for which points are awarded. At the end of the season individuals with the greatest number of points are awarded the craft cups.

In June members have an outing to a local hotel where they are provided with an excellent meal. This was accompanied recently with a visit to the theatre to see a musical.

Cults and District celebrated its 80th Anniversary with a party on 25<sup>th</sup> June 2009. An excellent buffet meal was provided by members followed by entertainment by Jim and Marissa Addison. We hope this presages a long and successful run in the 21<sup>st</sup> Century.

**(written by Catherine Stewart and handed in by Lyn Pithie)**



Creative Interiors



Interior Design • Home Staging

T: 01224 744040 F: 01224 744040  
E: [creativeaberdeen@btconnect.com](mailto:creativeaberdeen@btconnect.com)  
7 Hillside View Westhill Aberdeenshire AB32 6PD  
[www.creativeinteriors-aberdeen.co.uk](http://www.creativeinteriors-aberdeen.co.uk)



## Carols in Cults Event 2010

The Annual Carols in Cults Event took place on Monday the 5<sup>th</sup> December in 'Cults Square' outside the Cults Hotel. A very enjoyable time was had by all those in attendance.

The weather in the run up to the event can only be described as dastardly -

Arctic conditions with lots of snow and ice on the ground. Thankfully the afternoon of the event was blessed by sunshine (though very cold), which allowed sufficient slush and ice to be cleared to ensure that the event could go ahead on what later became a fine but cold evening.



An estimated 300 participants including the Bon Accord Silver Band, the Morven Singers and members of the local community came to the event. Sadly Santa's reindeer refused to attend as it was too cold and so the poor old gentlemen had to walk to Cults Square on his own, nevertheless his infectious good cheer shone through even that set-back!

Joint Masters of Ceremonies Ewen Gilchrist and Paul Watson had put together an entertaining programme of Carols and included excellent 'solo' pieces from both the Morven Singers and the Bon Accord Silver Band which were greatly enjoyed by the audience.

At the interval delicious hot soup and mince pies were provided by The Cults Hotel and Kelly of Cults respectively. These were much appreciated by all in attendance, though rumour has it that the members of Deeside Rotary Club, who did a most excellent job of stewarding the event (many thanks from the CBMCC), ate most of the mince pies – an ugly and untrue rumour I'm sure!

The collection, which was donated to Voluntary Services Aberdeen

**TENANTS WAITING** *Let us do the letting*

**PROPERTIES URGENTLY REQUIRED**

**PARKHILL**  
PROPERTY LEASING

13 Gilcomston Steps, Aberdeen

**01224 611606**

[www.parkhillproperties.co.uk](http://www.parkhillproperties.co.uk)

**REFLEXOLOGY**

**M. D. Robertson GSSR MSIR**  
(Practising 20 years)

14 Kirk Crescent South  
Cults

**Telephone 868381**

Bactache, Headaches, Stress, Sinusitis  
Pain Relief, Allergies, Organic, Glandular Disorders etc  
Vouchers, Talks

**Thinking about new or replacement blinds?**

Dee Valley Blinds would welcome the opportunity to provide advice and a quotation.  
To arrange a home visit call :

**BANCHORY : 01330 509014**  
**ABERDEEN : 01224 418010**

*blinds for all situations!*

**ALL TYPES OF WINDOW BLINDS SUPPLIED & FITTED**

**DEE VALLEY BLINDS**

VISIT OUR ONLINE SHOWROOM AT  
**www.deevalleyblinds.co.uk**  
Mobile : 07890 674510  
Email : [info@deevalleyblinds.co.uk](mailto:info@deevalleyblinds.co.uk)







(VSA), raised £327 and was used by VSA for Christmas related charitable causes in Aberdeen City.



The Community Council wish to express our thanks to:

MCs Ewen Gilchrist & Paul Watson

The Bon Accord Silver Band

The Morven Singers

The Cults Hotel (hot soup)

Kelly of Cults (mince pies)

Alexander Will (assistance with lighting)

The Police and Community Wardens (crowd barriers and control)

Aberdeen City Council (Events, Gardens & Roads Department)



## THE SALTIRE SOCIETY ABERDEEN & NORTH EAST BRANCH

Spring 2011 Meetings  
To be held in Rubislaw Church Centre,  
Beaconsfield Place Aberdeen,  
at 7.30 pm unless otherwise stated.

Tuesday 15th February  
The Special Collection Library  
of The University of Aberdeen  
Talk by Siobhan Convery

Tuesday 15th March  
Two North East of Scotland Missionaries  
Talk by Rev. Dr Henry Sefton

Tuesday 12th April  
Joint meeting with The National Trust for Scotland  
\* Meet in The Cowdray Hall at 7.00 pm  
The Renovations at Craigievar Castle  
Talk by Shannon Fraser

Tuesday 17th May  
Branch Annual General Meeting

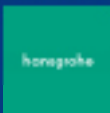
\*Further information from D J Robertson  
Tel: 01224 484061

**Duncan**  
**BATHROOMS**  
est. 1972

...for the very best in bathroom design, supply and installation



Exclusive suppliers of Ambiance Bain bathroom furniture



22-24 Auchmill Road  
Bucksburn  
Aberdeen  
AB21 9LD  
Tel: 01224 713330  
Email: [info@duncanbathrooms.com](mailto:info@duncanbathrooms.com)

## Amber Kindergarten: Camphill's early childhood centre



Amber Kindergarten is part of Camphill School Aberdeen. It is an inclusive kindergarten, working in partnership with Aberdeen City Council. In the morning we offer places for children between 3 and 5. Our approach is based on the principles of Waldorf Education and the Curriculum for Excellence.

We are very lucky to be situated on Murtle Estate, in the beautiful countryside between Bielside and Milltimber. We have a lovely garden, a sensory forest with snack and storytelling places and we can visit the animals on the farm and at the Riding School.

This Christmas the children in Amber Kindergarten treated their families with hand made presents. They were very proud to give gnomes made with pine cones and moss and woollen wall hangers which they had carded and felted. The children had fun collecting the natural treasures in our sensory forest and during walks to the farm.

They were intrigued to use the carder drum and the carders to mix the different coloured wool. These activities provided them with stimulating opportunities to develop their motor skills and helped to boost their self esteem. Feedback from parents confirms that this holistic and natural approach greatly supports a healthy development of their children.

In 2011 we want to offer these activities also in the afternoon. The project 'AMBER: WOODS AND CRAFTS CLUB' for 4 and 5 years old, will run on Wednesdays from 2pm to 4pm. Children will enjoy a Puppet Show, a craft activity, they will take home what they made and have some time for free play either in the garden or indoors. A variety of toys made of natural materials will be available. On Fridays, again from 2pm to 4pm, children will go to the forest or to the farm, have a craft activity related to nature, enjoy some storytelling and play outside.

Please contact us for more information:  
Murtle House, Murtle Estate, Bielside, Aberdeen AB15 9EP  
Telephone +44(0)1224 867935 Fax +44(0)1224 868420  
[www.camphillschool.org.uk](http://www.camphillschool.org.uk)



## Camphill School Aberdeen

Since the summer we have been addressing our low pupil numbers and have met with colleagues from Aberdeen City and Shire and are working towards producing a business plan in January. The six areas we wish to develop are:

1. To offer person specific short, medium and long term day or residential placements, including managing and supporting the transitions both into and from Camphill and residential assessment.
2. To offer 52 week placements for those children and young people who require this service.
3. To offer increased respite for the current Camphill School pupils.
4. To develop the Nature Nurture programme currently on offer, to 5 full days a week.
5. To develop a qualifications framework with Camphill School to enable our pupils to participate in nationally accredited schemes and to evidence their progress.
6. To further develop the flexible provision offered through the St Andrews Project which includes
  - Individual therapeutic programmes
  - Flexible day respite
  - Holiday provision
  - Transition programmes
  - 1-10 year old emergency care
  - School home support

A letter has been sent to Scottish Local Authorities outlining our plans, followed up with a phone call in February with a request to visit them and/or an invitation to visit us. We will also be seeking to reach the private market. Many of the above are not new services but give extra emphasis to certain areas of our work e.g. holiday respite care.

Both our main provision in Camphill School and Amber Kindergarten were inspected by the Care Commission and both received 'very good' feedback, a confirmation for us that we remain a high quality provision.

To those of you involved in fund raising for the Therapy Centre it is a joy to see it fully used and it is very much appreciated by all who use it whether they are practitioners or patients.

This term we hosted a conference attended by a number of people connected to Camphill involved in research to see how this could be better co-ordinated to benefit Camphill and to share good social pedagogical practice.

One of the highlights of the term has been the fundraising efforts of the Camphill Estate Youth Club which together with some co-workers identified the Indonesian volcanic eruption disaster as a worthwhile cause. To this end they organised an 'Open Stage' night in the Camphill Hall on St Nicholas' Day and managed to organise/coerce a number of star acts to perform; we had house communities singing, drumming, ballroom dancing, classical music,

**Amber Kindergarten**  
Camphill Early Childhood Centre  
Open Monday - Friday : 9.30 - 12.30 ages 3-6(2y)

- \* Purpose-built kindergarten
- \* Large outdoor play area
- \* Homely atmosphere
- \* Daily nature walks
- \* Weekly artistic and craft activities
- \* Well trained and qualified staff
- \* In partnership with Aberdeen City Council
- \* Part funded places available

For further information or to arrange a visit  
please contact : 01224 - 865893

rock music and a smattering of Christmas thrown in. They raised over £80. However the main thrust of their fundraising effort is to have some pupils and co-workers dye their hair and be sponsored for the joy of it! If you would like to sponsor them please go to: <http://www.justgiving.com/funkyheads>

Finally we had a visit from a reporter from the Korean Broadcasting Corporation which resulted in three half hour radio programmes being broadcast on their national network in December.

Laurence Alfred

# News from Camphill Medical Practice

In October last year Directors of our charity organisation agreed on a new trading name for our charity: **Camphill Wellbeing Trust**.

"The new charity name is to help clarify that there are two aspects of Camphill Medical Practice – the NHS practice and the charity," explains Dr. Stefan Geider. "The new Camphill Wellbeing Trust should make it quite clear that this part of the practice is run as a charity."

Camphill Wellbeing Trust provides Anthroposophic healthcare, an extension rather than an alternative to conventional medicine. The new charity name will help the practice's fundraising efforts for its charitable work, enabling people to receive anthroposophic therapies regardless of their financial circumstances.

Now you can help our fundraising efforts by organising an event, creating a personal challenge, marking a special event, or supporting someone special. Contact Jennifer Third in our charity office (01224 869833) and we can help you realise your goal.

The doors are about to open for another year of health talks, sponsored by **Friends of Camphill Medical Practice**. The Winter / Spring schedule is:

- **February 22<sup>nd</sup>** –Organic Farming, Food Quality and Health, with David Younie (Organic farming specialist at the Scottish Agricultural College)
- **March 29<sup>th</sup>** – Colour in Art Therapy, with Jennie Tanser (Art therapist at Camphill Medical Practice)
- **April 26<sup>th</sup>** – The Blank Stare, Electronic media's influence on speech and language development, with Donald Phillips (Therapeutic speech practitioner at Camphill Medical Practice)
- **May 31<sup>st</sup>** – To be confirmed

The talks, from 7.30-9.00pm on the last Tuesday of each month, take place at **Newton Dee Café**, off Old Ferry Road in Bieldside. They are free to the public but donations are kindly appreciated. After each talk refreshments are served when informal conversation can take place with the speaker or with others.

- Donald Phillips, Charity Facilitator

## Camphill Wellbeing Clinic

*An integrated medical practice with a holistic approach to healing*



**Conventional medicine and primary healthcare are complimented by Anthroposophic healthcare**



**Anthroposophic healthcare uses natural and homeopathic medicine**



**artistic therapies counselling and massage integrated with conventional medicine**

**www.camphillmedical.org.uk**

CWC, Bieldside, Aberdeen. AB15 9EP  
Tel: 01224 868935/869833



Camphill Wellbeing Clinic, incorporating the Camphill Medical Practice Ltd., a Scottish charity (SCO16291)



## Designer cuts and colouring for all the family at Linda's Hair Studio.

**Milltimber's new and trendy studio.**

Colours from : £45.00  
Kids under 13 years : £8.50

**SPECIAL OFFER : Over 60's - Cut and Restyle : £25.00**  
Home Visits by appointment

Linda has training and experience from Vidal Sassoon and Toni & Guy

**Tel : 01224-733250 or Mob : 07947 437 536**  
**9 Braehead Terrace, Milltimber AB13 0EB**



Something for everyone  
at your local  
community church!

[www.dcfchurch.org](http://www.dcfchurch.org)

Binghill Drive, Milltimber, AB13 0JE  
Church Office: 01224 733979

WORSHIP SERVICES

9:30am & 11:30am Family Service  
with crèche, Junior Church, S1-2 Bible Class  
and Celebration Group (11:30 Service only)  
6:00pm Evening Service  
with Communion 2<sup>nd</sup> & 4<sup>th</sup> Sunday monthly

Join us for our Easter Services  
Good Friday, 22<sup>nd</sup> April  
Evening Communion, 7pm

Easter Sunday, 24<sup>th</sup> April  
Family Service, 9:30 & 11:30am  
Easter Praise Evening, 6pm



Robert Hamilton, our Care Pastor, is happy to meet for a chat, perhaps to be a listening ear, offer help, share a pastoral prayer, or just get a chance to meet and say 'hello'. 07595072090 / 733979 (church)

community one  
milltimber's meeting place

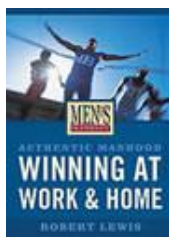


ALPHA



the  
Compass  
Course  
helping you find direction

You're most welcome to join us for  
COMMUNITY NIGHT  
starting 18<sup>th</sup> Jan 2011 and meeting  
Tuesday evenings, 7:30pm.  
The evening starts with a meal,  
and various study courses are on offer.



MEN ALIVE!



Test of FAITH  
SCIENCE & CHRISTIANITY  
UNPACKED



TEFL (Teaching English  
as a Foreign Language)



If you are soon to be married, or are  
already married and would like to  
enrich your marriage, we offer  
Marriage & Marriage Preparation  
courses. Phone the Church Office.

EXPLORERS & CHALLENGERS

We meet on Wednesday evenings



P1-3  
6:30-7:30pm



Come along - and  
bring your friends!

P4-7  
7:30-8:30pm



You will be made most  
welcome at our over 50s  
social group – events, outings,  
Coffee Mornings and more!



THE  
ARK

PARENTS, BABIES & TODDLERS  
We would love to have you join us  
with your little ones Tues mornings,  
9:45-11:30am. Phone Pauline 730171  
or just come along.



We look forward to  
welcoming you  
on Thursday mornings  
9:15am-12pm  
Coffee/Tea & Tray-bake  
(donation £2)

FRIENDSHIP IN ART



All artists most welcome!  
Every 2<sup>nd</sup> & 4<sup>th</sup> Thursday  
monthly in Café One,  
2:30-4:30pm. Creativity  
in art enjoyed among  
artistic friends, with time  
for coffee and a chat too!

Registration forms available from the Church Office  
or phone Rhona Magowan on 733350 for info



Playgroup @ Deeside



MISSIONARY CRAFT WORKSHOP

We meet in Café One every 2<sup>nd</sup> & 4<sup>th</sup>  
Wednesday monthly, 10am-12pm to  
make useful gifts to send to children  
and missionaries working abroad. We  
would be pleased to have you join us.

# Are you involved in Corporate Awaydays? A Community Council Initiative

## What is an Awayday?

Many companies arrange a day away from the office for groups of staff to spend time together to build team morale. Popular pastimes are group activities such as driving all-terrain vehicles or taking part in complicated games set up by specialist companies. These are certainly good fun but more constructive projects can give greater scope to develop initiative and teamwork. They may also be designed to benefit the community and hence give more satisfaction to participants. Examples might be:

- Tidying waste ground
- Creating garden areas
- Creating/maintaining pathways – fences, gates, stiles, bridges, boardwalks
- Maintaining community buildings
- Improving the environment (see article on page .. on Himalayan Balsam)

## Opportunity for a Community Council Initiative

The Community Council is interested to promote this sort of project in their area. We would like to provide those involved in organising awaydays with a list of suitable projects which they might like to consider. The aim is:

**To create a partnership between the local community and local companies, providing lasting benefits to the community and, for the companies, useful opportunities for team building and some positive publicity.**

## We need your help!

The CC intends to compile a register of potential away-day projects, perhaps giving a brief idea of the scope of the work, the manpower and skills needed, approximate costs, possible funding sources, etc. We will then advertise this register so that the right people get to hear about it. But we need your help and have two questions for you:

1. Can you suggest suitable awayday projects to help the community in our area?
2. If you have an idea for a project which might be suitable for the register, we would be delighted if you would send a brief summary to the Community Council at [CBMCC@cbmcommunity.org.uk](mailto:CBMCC@cbmcommunity.org.uk) or write to the secretary at 5 Millden Road, AB15 9LJ
3. **Does your company arrange awaydays?**  
When we have produced the register, we need to circulate it to the right people in a range of companies. Our problem is in making contact with the relevant people in local companies within the Aberdeen area.

So if you are involved in organizing awaydays for your staff or know colleagues who might be interested in getting information on our project options, then please contact the Community Council at [CBMCC@cbmcommunity.org.uk](mailto:CBMCC@cbmcommunity.org.uk) or the secretary at 5 Millden Road, AB15 9LJ; tel. 864925



## Milltimber Playgroup Winter Fun

Milltimber Playgroup and Rising Fives had another busy term in the lead up to Christmas. We particularly enjoyed the snow (well, the children did, not so sure about mums and dads!) which gave us an excellent opportunity to wrap up warm and get out in the fresh air. The snow also came indoors and provided some great messy play too!

We finished our term with an exciting bus trip to Santa's grotto down at the beach. We had a lovely morning at soft play, and met the man himself and his reindeer.

Our fundraising had a fantastic boost in November when we held our two big annual fundraisers on consecutive weekends - a busy couple of weeks to say the least! Thanks to everyone's hard work and the support of the local community we raised a whopping £3400 between the Guy Fawkes family fun night and the race night. Massive thanks go to all who attended, organised, sponsored or contributed in any other way.

Our playgroup is an ideal start to your child's education and provides an excellent opportunity for parents to get involved in the local community. We currently have funded and non funded places in all our sessions for children aged 2½ -5 (Mon, Tues, Thurs, Fri 9.30-12, optional lunch club Tues & Fri 12-1, Rising 5's Fri 1-3, Tues Rising 5's hopefully coming soon) We also have options for 'wraparound care' with transport to/from Milltimber Nursery.

A few of our children will have moved on to morning nursery after Christmas, so we would love to welcome some new recruits! Our playleader Lyndsay would be delighted to hear from you. Phone (07519902470,

email [milltimberplaygroup@hotmail.com](mailto:milltimberplaygroup@hotmail.com))

to arrange for you to drop by the MCA hall one morning for a taster of the fun we have!

Lisa Wood, Chair





**Fiona Jack**  
artist



commissions welcome



01224 735 745  
fionasartandsoul@gmail.com  
www.fionajack.viewbook.com

# WINDOW CLEANER



In MBCarea since 1983

LICENCE/INSURANCE  
FREE ESTIMATES  
SILLS CLEAN INCLUDED  
ROOF GUTTERS CLEARED

Tel : GORDON OR FULL  
01224 - 825565 or  
07762 148712  
E-mail : clean@fmail.net

**Visit Storybook Glen**  
And live happily ever after

**A Perfect Venue for Children's Birthday Parties**  
Aberdeen's Children's Theme Park

6 STORYBOOK GLEN, MARYCULTER, ABERDEEN, AB12 8PT  
Tel/Fax (01224) 732841  
www.storybookglen.aberdeen.co.uk

**OPEN ALL YEAR**

Available to all users for home and business

**QUALITY SERVICES | LOW COST PRICES**  
**FAST REPAIRS | FREE QUOTES**

- Laptop & PC Troubleshooting
- Software Installation & Troubleshooting
- Virus/Spyware removal
- Password Recovery
- PC / Laptop Health check
- Data recovery
- PC / Laptop repairs & part upgrades
- Printer Installation & Repair
- Broadband Installation & Troubleshooting
- Domestic Visits

**SPECIAL OFFER**

If your PC or Laptop is running slow try our computer service for

**01224 433490** £59

**Microsoft CERTIFIED Professional**

info@solvtek.co.uk | www.solvtek.co.uk

# BLIND SOLUTIONS

The Commercial & Domestic Blind Specialists

**SUPPLY · INSTALL · REPAIR**

VERTICAL	ROMAN	SHUTTERS
ROLLER	WOODEN	CONSERVATORY
VENETIAN	VELUX	CLEANING

For Free Quotes and Estimates contact Scott Cadenhead  
Tel: 01224 870038/07875 69265 or visit [www.blindsolutions.info](http://www.blindsolutions.info)

# An invader up the Dee

A walk up the Dee last July and August might have given you a surprise. Along the north bank all the way from Garthdee to Milltimber, Himalayan Balsam has established itself in dense colonies all the way up from Sainsburys to Cults Reservoir. It was very noticeable because it was all in bloom and looking very beautiful – red and pink flowers on stems about 1 to 1.5m high. However, it is a foreign invasive species which completely swamps all the native plants. At Cults it was striking that beyond the stretch where the balsam had taken hold, the banks were covered with an extensive range of native wild flowers, also looking beautiful in their varied colours – blues, reds, pinks and yellows. It is possible that we will soon have a monoculture of balsam on both sides of the Dee along that stretch. Above Cults the invader was more sporadic but still clearly beginning to establish itself in patches, presumably from populations further upstream. The threat of these non-native species was featured recently by Dougie Vipond on Landward (3 December). Not only do they spread quickly - each plant producing huge numbers of seeds – but, because they are annuals and die back in winter, they can cause erosion of river banks when grass and other plant life are prevented from growing and holding the soil together.

The Community Council has been in touch with the Dee Catchment Partnership which is the management body for the Dee. Their Business Plan has an objective to control non-native invasive species including balsam but we have been told that its control and eradication are not high on their priority list at the moment.

The question is: Do we want to stem the tide of balsam? If a monoculture of balsam along the banks of the Dee is the likely result then the answer surely is yes. There are recognised effective methods of getting rid of it. Of course we will need to be advised by the experts but the plant is harmless and it can be uprooted easily – unlike those other well-known foreign plants: Giant Hogweed which is poisonous and Japanese Knotweed which is very difficult to eradicate. Removal of the offending weed would be an excellent community project. The various Community Councils along the Dee could coordinate the effort or alternatively it would make an excellent project for a corporate away-day – see article on page Y. CBMCC is pursuing this issue with the Dee Catchment Partnership and hopefully some action will be taken in due course. We will keep you posted!

Himalayan Balsam (pic by NERC-Wallingford)



If you have noticed this or any other invasive species in our area then please contact a member of the Community Council.

I moved in with  
**MARTIN**

**MARTIN & CO**  
the UK's No. 1 letting agent

**01224 636500**  
123 Rosemont Place, Aberdeen AB25 2YH  
aberdeen@martinco.com + www.aberdeen-martinco.co.uk

**50% Discount on your Initial Fee**  
New Landlords and Tenants  
Simply quote FHD7

**Why are so many people moving in with MARTIN?** Is it the huge choice of properties, expert local knowledge, or hassle free service?

At **MARTIN & CO** we believe it's because we always go the extra mile. Maybe that's why so many people are moving in with us, and why we're the UK's No. 1 letting agent.

**Here are a few more reasons to move in with MARTIN:**

- We'll help find a property to suit your needs and budget
- We'll ensure the 'move in/move out' process is quick and easy
- We'll arrange viewing times to suit you, not us
- We'll always make sure our properties are in good condition
- We'll deal with the landlord so you don't have to
- We'll take care of all the legal stuff

**We'll find the right property for you**  
Contact your local Martin & Co office or log onto the website [www.martinco.com](http://www.martinco.com)



# Colin Forbes

Mobile Alloy  
Wheel Repairs

Email: [repairs@smartalloyaberdeen.co.uk](mailto:repairs@smartalloyaberdeen.co.uk)  
Mobile: 07903 672221  
[www.smartalloyaberdeen.co.uk](http://www.smartalloyaberdeen.co.uk)



- Mobile Service
- Alloy Wheel Refurbishment
- Kerb & Scuff Damage
- Refurbishment of Polished Alloys
- Fully Guaranteed Durable Repairs



QUALITY  
ASSURED  
AWARDS



## Cults Offers Amateur Swimming Club Learn to Swim Classes

For beginners and improvers  
For children aged 4 and above

### Cults Pool:

Monday 4 - 6 pm  
 Wednesday 6.30 - 7.30 pm  
 Friday 4 - 5 pm  
 Saturday 12 - 4 pm  
 Sunday 12 - 4pm

### Camphill Pool:

Saturday 9 - 11 am  
 Sunday 9 am - 1 pm

Aqua 1 - Aqua 5 Classes available  
Places also available for competitive swimmers  
Visit our website for further information

For more details, please contact

Sonia Richardson on 01224 319 477  
[LTS@cultsofters.org.uk](mailto:LTS@cultsofters.org.uk)

[www.cultsofters.org.uk](http://www.cultsofters.org.uk)



SCOTTISH *swimming*  
everyone can swim!

# BAD HAIR DAY

The team at Eclipse Hair Design would like to welcome you to their salon in **Torphins**. Experienced stylists offer the latest in cutting and colouring techniques in a comfortable and friendly salon.

Please phone to arrange an **appointment**, a **free consultation** or for more information about **BEOX Professional**.

**Tel. 013398 89089**  
14 Craighour Road  
Torphins, Aberdeenshire



# NO MORE!

With winter upon us, Eclipse Hair Design is excited to announce the arrival of **BEOX Professional, Brazilian Keratin Treatment**, to our salon in Torphins.

We are proud to be the first in Aberdeenshire to offer this revolutionary treatment. Creating beautiful, shiny, manageable hair to stand up to even the harshest Aberdeenshire weather.

- Removes Frizz
- Reduces Drying Time
- Significantly Improves Manageability
- Healthy, Shiny and Smooth Hair
- Can be used on all hair types



BEFORE



AFTER

Take control of  
your frizz and  
banish the BHD!



**PHOTOStoDVD** www.PHOTOStoDVD.org.uk  
 info@PHOTOStoDVD.org.uk  
 Tel. 01224 743733

Convert your Photos, Slides, Videos or Camcorder Tapes  
 miniDV digital8 Hi8 VHS


to a personalised  
 PHOTOMONTAGE

The Ideal Present or Gift for a  
 Wedding Anniversary  
 Birthday or  
 Special Occasion

Or try the very popular  
 PHOTOMONTAGE  
 Choose your own  
 background music  
 Samples available  
 on the website

From only £17

## Cults Medical Group



Firstly, may I take this opportunity to wish you all a happy and healthy 2011?

We are delighted to welcome Dr Adam Booth and Dr Jodi West to Cults medical Group. Adam will be an eight session partner and Jodi will be doing four sessions per week. They will both start work with us at the beginning of January.

Treatment room one is in the process of being totally refurbished so I apologise for any disturbance while the work is being completed.

Our flu vaccination programme has again been very successful this year, but if you are over 65 or in an at risk category and have not yet had the vaccination, please contact us at the surgery for an appointment.

Finally, I would like to thank all our patients who very kindly handed in presents to both doctors and staff over the Christmas period. This is very much appreciated.

Tracey Wilson  
 Practice Manager

## Cults Lawn Tennis Club – 2011

Cults Tennis Club had a successful action packed year in 2010, thanks to the input of a very proactive committee. The new Head Coach, Gareth Rennie, was appointed at the start of the season and Andrew Fraser continued as Assistant Coach for another year. For the juniors they organised



great Easter and Summer camps and Group Coaching Sessions for different age groups during term time. The membership has increased overall by 17.7%, largely due to a big increase in the number of mini members (under 10s), but the number of senior members also rose by 4.2% and junior members by 9.1%. For 2011, subscription rates will be maintained at the current level.

Cults players performed well in all the 2010 Aberdeen Tournaments. Cults mixed team reclaimed the Fleming Trophy by beating Stonehaven in the final and the Ladies A Team did particularly well to come top in Division 1 of the North East Leagues.

Meanwhile a new kitchen was fitted and members enjoyed various social activities throughout the year. One event which was not dampened by the bad weather was the Fireworks Display, held for the first time in November.

At the end of the season all six courts were cleaned and treated to remove any debris which was tending to reduce drainage. The courts are now in good condition. Coaching sessions, social play and winter leagues are ongoing.

Full details of activities are available on the website at [www.cultstennisaberdeen.co.uk](http://www.cultstennisaberdeen.co.uk)



## CULTS LAWN TENNIS CLUB

- Friendly local club
- Excellent facilities including 6 floodlit artificial grass courts
- Professional coaching team headed by Gareth Rennie
- Extensive coaching programme available throughout the year for all members (Junior and Senior)
- Weekly session for both social and competitive players
- Social events and club tournaments

Contact the Secretary Maggie MacLennan on 017483 for membership details  
 Contact the Coach Gareth Rennie on 0771 4753487 for coaching details

**www.cultstennisaberdeen.co.uk**

## Rotary Club of Aberdeen Deeside

New Year 2011 has begun and Rotary Clubs throughout the world are gearing up again to put into action their dreams, plans and aspirations for the second half of this Rotary Year. And in our Club we have much to do.

We are already planning for our turn of the Charity Shop in George Street, Aberdeen from Monday 28<sup>th</sup> February to Saturday 5<sup>th</sup> March. Over the last few years we have raised a magnificent amount out of 'bric-a-brac, books, toys, household goods, linen and clothing' – so if you've not done your spring-cleaning yet, then now's the time to get cracking and perhaps be good enough to donate your surplus to us. The money raised will be put to worthy uses, we can assure you.

We will be organising the annual local Primary Schools Quiz and we have an adult Quiz Night on Friday 1<sup>st</sup> April at Cults Hotel (tickets from any Rotarian member or President Mike Hedges) – so get a team together and come and join us for a night full of fun and fund-raising.

Can we take this opportunity to thank the pupils (and parents) of Culter School Nursery, Milltimber, Airyhall and Kingswells Primary Schools for helping to fill 543 Rotary Shoeboxes with gifts for the deprived children and households in Romania, Croatia and

Ukraine? A really good effort.

We are also grateful for the willing knitters who helped us achieve 120 babies' jackets which are already on their way to Freetown, Sierra Leone. If you still have one on your knitting pins – or meant to knit for us and just didn't find the time, then we'll be pleased to accept and pass on still more.

In return, we were pleased to lend a hand at the MBC Carol Night and the Culter Lights Up events. We have Rotarians in both Community Councils, so our local community involvement is important to us.

Other needy causes that we have supported recently have been ARCHIE (Aberdeen Sick Children's Hospital), the Haiti Cholera Epidemic, Diabetes UK and End Polio Now Campaign.

So whether it's collaborating with local events to offer some more hands, or fundraising for projects near and far, learning more about our community and what is happening within it, Rotary puts "Service above Self" in order to **"Build Communities and Bridge Continents"**.

If you'd like to know more about Rotary and how to become a member, please contact President Mike Hedges at [michael.hedges@btinternet.com](mailto:michael.hedges@btinternet.com) for information or go to our website – [www.aberdeendesiderotary.org.uk](http://www.aberdeendesiderotary.org.uk)

**danacentre**

**Classes**

• Danacentre, Golfa, Birch, Westhill  
Kingswells, Golfa, Craigleuchter & Redburn



PHONE US OR VISIT OUR WEBSITE

**01224 647341**

[enquiries@danacentre.com](mailto:enquiries@danacentre.com)

Ballet – Jazz – Tap  
Contemporary – Boys Only  
Hip-Hop – Adult Classes  
Higher Dance – Summer Schools  
Dance Leadership Award  
Vocational Classes

[www.danacentre.com](http://www.danacentre.com)

Main hub - 33-31 Hutchinson Street | Aberdeen | AB25 3PQ



Telephone: 01224 531166

Email: [andrew@contlaw.co.uk](mailto:andrew@contlaw.co.uk)

Web: [www.contlaw.co.uk](http://www.contlaw.co.uk)

**Andrew Mein**

25 Contlaw Place, Milltimber  
Aberdeen, AB13 0DS

# Waiting For Spring

After what seems to have been a long and hard winter, I expect most people will be delighted to welcome the spring when it finally arrives.

Our gardens have taken the worst that the weather has had to throw at them, so will need a bit of TLC to get them back into shape and looking their best. Once the worst of the winter weather is over and we are again able to get outside there are a number of jobs that could be done.



Depending on the weather conditions the following tasks should be undertaken during the spring months. However as the weather will still play an active role in what you are able to get done, some of the tasks listed may be best done late March or in April when the weather has had some chance of warming up a bit.

- Cut back deciduous grasses left uncut over the winter.
- Prune climbers.
- Mow the lawn on dry days.
- Apply a high nitrogen spring lawn fertiliser to encourage good, strong growth.
- Plant summer-flowering bulbs.
- Lift and divide overgrown clumps of perennials. Good examples are those that have grown too big or that are flowering poorly.
- Apply a general fertiliser to all plants. Apply the fertiliser where the roots are - roughly a similar area to the spread of the branches.

- Protect new spring shoots from slugs.
- If the weather is dry, paint fences and other wooden structures with a preservative.
- Mulching rose and shrub beds with a layer of organic matter will help retain moisture and reduce weed build-up – even improving soil structure over time.
- As the weather warms up weeds will start to grow, if you have not finished any new paths etc then do so before plants start to take over.
- April is the best month to apply lawn weed killers as the weeds are inactive growth.
  - If you didn't do it last autumn it's not too late to scarify the lawn – raking out the dead moss and thatch. This will encourage new grass growth.
- Erect trellis, pergolas etc before plants start to grow and use them for support.

**TIP** – Don't put off cutting the grass – cutting it in the spring will encourage new, healthy growth and discourage the growth of seasonal weeds that could wreak havoc later in the year! Cutting the lawn edges can really improve the look of your garden and save you work later on.

Of course if this list just looks too long and exhausting to tackle, then the other alternative is get someone else in to do the work. You can then sit back and just enjoy your garden and the spring when it finally arrives.

Moira Gash  
Classic Abode Garden & Landscaping Services  
Tel: 013398 82496 / [www.classicabode.co.uk](http://www.classicabode.co.uk)



**Garden & Landscaping Services**

Garden maintenance, pruning, weeding & planting  
Grass & lawn maintenance and new lawns laid  
Hedge planting & trimming  
Bark or chips supplied & laid  
Garden design & makeovers  
Patios, Decking, Paths & Fencing, Garden Structures

Commercial & Residential - Friendly & Professional Service  
Ask about our "Early Bird" Spring Discounts

Free Estimates—Contact Moira on 013398 82496  
[www.classicabode.co.uk](http://www.classicabode.co.uk)




**SALSA CLASSES**  
**Beginners**

SALSA IS GOOD FUN  
IMPROVE YOUR DANCE SKILLS,  
CO-ORDINATION AND RHYTHM



Class every Thursday  
( 7 - 8 pm )  
starting Thur 7th Apr

**LATIN CARDIO**

Dance based cardio Cha Cha Cha,  
Mambo, Bachata,  
Merengue and Reggeton  
with core stability and stretching



Class every Monday  
10 - 11 am

CULTER VILLAGE HALL  
178 NORTH DEESIDE ROAD, PETERCULTER  
IF YOU WOULD LIKE TO FIND OUT MORE CALL  
MAYLIN 07931372205



Established 1971

## For Children 1 1/2 - 5 yrs

Playgroup: Mon to Fri 9.15am - 11.45am

Rising 5's: Weds 12.30pm - 3pm

Lunch Club: Tues 11.45 - 12.45pm

Rising Two's : Mon 09.30 - 11.30am



Friendly, Qualified Playgroup Team

Secure Outdoor Play Area

Funded and Non-Funded Places Available

Flexible Number of Sessions Accommodated

for more information or to arrange a visit

Tel. Amanda: 07502 126363

Email [cultsplaygroup@hotmail.co.uk](mailto:cultsplaygroup@hotmail.co.uk)

Website [beehive.thisisnorthscotland.co.uk/cultsplaygroup](http://beehive.thisisnorthscotland.co.uk/cultsplaygroup)

Member of the Scottish Pre-School Play Association  
In Partnership with Aberdeen City Council

## Breaking News: MBC Festival

Planning for a bigger and better MBC Festival in 2011 is about to get underway and an open meeting is planned for **Tuesday, 22nd March** 2011 in the Hub, Cults Outreach Centre at 2.30pm.

The planned redevelopment of the Outreach Centre may affect some of the long-standing events in 2011, but don't worry, we'll be working hard to ensure a variety of events so that there is plenty for young and old.

One of the new events we've already agreed on is a Kid's "Come and Try" afternoon - which will hopefully feature lots of fun and physical things that the children can get involved in. However, we are still looking for new ideas. Please come along to the meeting or contact one of the organisers and help us make the 2011 MBC Festival the best one yet!

John Page (Chairman) - tel 867988

Joyce Wright (Secretary) - tel 867398

Christine Cole (Art) - tel 868436



## THE ARK

We'd love if you would join us at the mums and babies/toddlers group.

We meet on a Tuesday at 9.45 to 11.30 during term time in the main hall of Deeside Christian Fellowship Church, Milltimber. We play with great toys, have a snack and sing some songs (and the mums have a coffee too!)

For more information call Pauline on 01 224 7301 71 or email [pauline@cordons.com](mailto:pauline@cordons.com)



## KELLY OF CULTS

In 1902, Benjamin Kelly founded his family bakery business on the principles of Quality, Value & Service. At Kelly of Cults, some things never change.

Visit our Cuscuter supermarket in Cults for all your daily grocery shopping needs:

- \* Groceries
- \* Fresh Bakery
- \* Wines & Spirits
- \* Fresh Fruit & Veg
- \* Frozen Foods
- \* Fresh Fish
- \* National Lottery
- \* PayPoint
- \* Daily Newspapers
- \* Home Deliveries

Tel : 0845 456 1902 Fax: 01224 869864  
345 North Deeside Road, Cults, Aberdeen, AB15 9SX

## Pilates Aberdeen

### SOLVEIG DAHLE SMITH

Cert. Pilates Inst. MAPPI  
Experienced musculoskeletal physiotherapist

#### PILATES CLASSES

Suits all ages and fitness levels  
Small Classes

PETERCUTTER SPORTS CENTRE

Monday & Tuesday afternoons

Wednesday & Thursday evenings

CULTS WEST CHURCH

Friday mornings

[solveig@pilatesaberdeen.com](mailto:solveig@pilatesaberdeen.com) [www.pilatesaberdeen.com](http://www.pilatesaberdeen.com)

01224 - 861421



# Culter Theatre Club

Last year's pantomime (Jack and the Beanstalk) was another sell out success for Culter Theatre Club. We saw new talents emerge and we hope they will join us in future productions. The audience tucked into some ice cream during the interval despite outside temperatures plummeting to -10°C! Our thanks to all the back stage crew and helpers who contributed to this very enjoyable experience. Thanks also to the local businesses who either sponsored the pantomime or provided generous raffle prizes. Not forgetting the people of Culter who always support the club so well. Without an audience we are nothing!

Various local groups received donations including Culter Village Hall, Blue Door, Eastleigh Nursing Home, Culter Playgroup and Culter School Nursery. A donation was also made to Roxburghe House in memory of Owen McPherson, a regular guitarist with the band.

This year, the Theatre Club is launching a Community Choir for adults which will meet on Thursday evenings between 8-9.30pm in the Village Hall. The first meeting will be later in the year so look out for more details in the Spring.

If you are interested in joining the club, please contact Alison Skinner at Culter Village Hall on 734371 for further information.



## Cults Parish Church

*reaching out to the community*

**SERVICES** Adult worship, JAM (Jesus and me, it was previously the Sunday School,) and Crèche, every Sunday at 10.30 am.

**COMMUNION** Shared on the last Sunday each month.

**WHEN THE SUN GOES DOWN** A reflective evening service, which is held on the last Sunday of January, February and March at 6.00pm.

**WEDDINGS AND BAPTISMS** We welcome all enquiries and are happy to meet with couples and families.

**WEEKDAY ACTIVITIES** Many members and friends meet during the week to share their hobbies and interests. A list of these meetings is on the church's website at [www.cultsparishchurch.co.uk](http://www.cultsparishchurch.co.uk)

**HUB CAFÉ** The Hub Café offers light lunches and home-baking every Tuesday and Wednesday from 10.00am to 3.00pm.

**CULTS O50** See either the O50 notice-board at the Hub or the Hobbies and Social page of the MBC News.

**MINISTER** Ewen Gilchrist, 1, Cairnlee Terrace, Bieldside, Aberdeen, AB15 9AE. Tel: 861692.

**CHURCH OFFICE** Cults Parish Church Outreach Centre, 404, North Deeside Road, Cults, Aberdeen, AB15 9TD. Tel: 869028. Email: [cultsparishchurch@btinternet.com](mailto:cultsparishchurch@btinternet.com).

**SANCTUARY** Cults Parish Church Worship Centre, 1, Quarry Road, Cults, Aberdeen, AB15 9EX.



**ferryhill**  
HOUSE HOTEL

169 Bon-Accord Street  
Aberdeen  
AB11 6UA

- Restaurant
- Maltroom bar
- Outdoor Area

☎ 01224 590 867  
[www.ferryhillhousehotel.co.uk](http://www.ferryhillhousehotel.co.uk)

*Both family owned and run - for the personal touch  
Hope to see you soon!*



**fourmile**  
HOUSE KINGSWELLS

Old Skene Road  
Kingswells  
Aberdeen  
AB15 8QA

- Conference Room
- Restaurant

☎ 01224 740 318  
[www.fourmile.co.uk](http://www.fourmile.co.uk)



**THE BLUE DOOR**  
charity shop

57-59 North Deeside Road, Bieldside Tel: 01224 861830  
Open Wednesday to Saturday, 10am to 4pm

**Spring Outfit?  
Easter Gifts?**

*Pop in and see what you can find!*

FRIENDS OF CAMPBILL MEDICAL PRACTICE  
Registered Scottish Charity SC035583

# WHAT'S ON LOCALLY

What terrible weather... hope it didn't ruin your holiday plans! This month I have added the Buoyancy Swim classes which Julie McQuillan is starting at Camphill School. Julie has an advert in the mag, which gives more details. Congratulations to Andrew Duthie, the new chair of the Milltimber Community Association. Thanks to everyone else who has sent me information about changes to contact details. Please remember also to let me know if you want to add or delete an activity - this listing is only as good as the information you give me. Let's get out and enjoy Spring, if it ever arrives!

Eleanor Brennan, Tel 862262,  
email: brennaneleanor@yahoo.co.uk



**La-ZeniaVilla.com**

**MODERN VILLA TO RENT – FROM £200 per week**  
Costa Blanca – 300 days sunshine per year!

- Three bedrooms - sleeps 6.
- Recently refurbished.
- Budget airlines to Alicante or Murcia.
- 5 mins drive to 3 Championship Golf courses.
- 10 mins walk to Blue Flag Beaches.
- Communal Pool on complex.
- Air Con / Sat TV / Cot etc.
- Suit Families/ Couples/ Golfers.

**CONTACT: 01224 791574 or 07766 404366**  
or see [www.la-zeniavilla.com](http://www.la-zeniavilla.com)

## ABBREVIATIONS FOR THE VENUES

- CA** - Cults Academy
- CAP** - Cults Academy Pool
- CCC** - Cults Community Centre, Earlswells Road
- COC** - Cults Outreach Centre
- CSC** - Culter Sports Centre
- CWC** - Cults Worship Centre
- DCFC** - Deeside Christian Fellowship Church, Milltimber
- IBC** - International Baptist Church, Cults
- KCC** - Kingswells Community Centre
- KMCC** - Kaimhill Community Centre
- MCAH** - Milltimber Community Association Hall
- MPS** - Milltimber Primary School
- PVH** - Peterculter Village Hall
- SCC** - Scout Centre, South Ave, Cults
- SCPT** - Scout Centre, Pitstruan Terrace, Aberdeen
- SDCH** - St. Devenick's Church Hall, Bielside
- SHE** - Simeon Home for the Elderly, Cairnlee Road
- SMH** - St. Martin's Hall, Cairnlee
- SPHH** - St. Peter's Heritage Hall, Peterculter
- SWP** - Shell Woodbank, Pitfodels
- WRIH** - WRI Hall, Kirk Crescent, Cults
- WSC** - Waldorf School, Craigton Road, Cults



**BDSERVICES**

**RIAN DUGUID**

Telephone: **0777 387 6338**

**Fabrication • Welding • Blacksmith**  
**Ornamental Steel Work & Gardening**



**Handy Dan** 

**Garden and Household Maintenance**  
**Painting**  
**Patios Cleaned etc**

**Call : 01224 - 732558**  
**handydan1@windowslive.com**



**Dutch After School**

The Rijnlands Lyceum offers Dutch lessons  
At Cults Primary School for children aged 4 to 15  
**Tuesday Afternoon from 4.15pm-5.15pm**

For more information please contact  
**Ada Renwick 01224 866266**  
Or email [adarenwick@gmail.com](mailto:adarenwick@gmail.com)

# Fitness, Sport and Dance

## **BADMINTON - JUNIOR, CA**

Saturdays, 1.30 - 5.30pm September to April  
Contact Cults Community Centre, Tel : 868858

## **BADMINTON - ADULT, CA**

Tuesdays, 7.30 - 10.00pm  
Contact Rob Wheadon, Tel : 323711

## **BADMINTON - SOCIAL, MCAH**

Mondays, 1.30 - 3.00pm  
Wednesdays, 10.00am - 12.00noon  
Contact Marion Anderson, Tel : 732505

## **CULTS BOWLING CLUB**

All ages very welcome  
Summer Bowling, Winter Activities  
Contact David Steele, Tel : 868485

## **CANOE CLUB, CAP**

Fridays, 7.50 - 10.00 p.m.  
Saturdays 4.00-6.00 p.m.  
Contact Jim Kinnear 313149 or  
Kenny Brown, Tel. 07788-507275

## **RAGGIE MORRISON'S LADIES CLOG**

**DANCING, SDCH**  
Ladies of all ages and beginners especially welcome.  
Meet Wednesdays 7.45 - 10.00 pm  
Contact Rosemary Crabbe-Wyke - Tel : 07950-086739 or Moira Skingley - Tel : 867801

## **CULTS CRICKET CLUB**

Contact Ian Sutherland, Tel : 742833

## **CULTS FIT FOLK, IBC**

For men and women over 55.  
Wednesdays 10.00-11.00 am  
Contact Ellie Whyte, Tel : 861204

## **CULTS HILLWALKING CLUB, CCC**

Indoor session 1st Thursday of the month, 7.30 - 9.30 pm  
Walks on Sundays, 10 days after the meeting!  
Contact David Milne, Tel. 869643 or Paul Wilcox, Tel. 869276

## **CULTS LAWN TENNIS CLUB**

32 Abbotshall Place, Cults  
See separate item in MBC News for full details  
Contact Maggie MacLennan (Sec), Tel. 861485 or  
Gareth Rennie, Mob. 07714-753607.

## **DANCE CLASSES FOR BOYS & GIRLS (AGED 3+) MCAH**

Taylor School of Dance, MCAH  
Recreational, Vocational & Adult classes available  
Classical Ballet, Modern Theatre, Tap, Jazz, Street  
Jazz, Musical Theatre Dance, Boys Only Street  
Moves, Adult Tap,  
Contact Gael Thomson, Mob. 07531-811506  
E-Mail - Gael@taylordance.com

## **DANCE CLASSES**

Karen Berry School of Dance  
Tuesdays and Wednesdays CWC  
Classes for children and students Mon, Wed, Thurs  
PVH  
Adult Classes, Wednesday evenings PVH  
Street dance and Teen Jazz - Tues CWC & Wed PVH  
For details see the website [www.danscentre.com](http://www.danscentre.com)  
or contact Karen Berry - Tel : 647341

## **GENTLE EXERCISE, ind DANCE COC**

Sept to Dec : Jan to Mar  
Outreach Centre, Upper Hall  
Thursdays, 2.30-3.30pm

Contact Fiona Murray -  
Tel : 702305

## **FLEX'n STRETCH, CSC**

Thursdays 7.30-8-  
.30pm  
Varied fitness levels  
Contact Anne Low, Tel  
: 868553

## **FOOTBALL IN THE COMMUNITY, CSC**

Wednesdays, CSC,  
4.00-5.00pm 5-8 year  
olds  
Contact Dons in the  
Community -  
Tel : 650472 or 650432

## **PRE-SCHOOL FOOTBALL (KCC)**

Mondays, 1.00-1.30 p.m., 1.30-2.00 p.m., 2.00-2.30  
p.m.  
Fridays, 9.30-10.00 a.m. 10.00-10.30 a.m. 1.30-2.00  
p.m.  
(Classes also available at Airyhall Community  
Centre)  
Contact Alison McLeod Tel 314669

## **BOYS' FOOTBALL CLUB, CCC**

Under 14s football.  
Wednesdays, 7.30-9.00pm  
Contact Gillies MacDonald, Tel 861097

## **CULTER YOUTH FOOTBALL CLUB**

Boys' and Girls' Teams, aged 6 to 19 years  
Training most days  
Contact : Mick Thornton 734228 or Gavin  
Fisher, 734332

## **KARATE, CCC**

Thursdays 7.30 - 8.30pm  
Fridays 4.30 - 5.30pm  
Contact Ronnie Watt, Tel : 734607

## **KEEP FIT CLASS, CWC**

Tuesdays, 10 - 11am  
Gentle Exercise for the over 60s  
Contact Pam Henderson, Tel 868862

## **FRISKIS & SVETTIS - SWEDISH STYLE KEEP FIT**

Mon (Rosey) 7.30 pm, IBC, medium  
Wed (Christine) 7.30 p.m., IBC, medium  
Thurs (Gavin) 9.30 a.m., IBC, medium  
Thurs (Aileen) 7.30 p.m., MCAH, basic  
Sat (Rota) 11.00 a.m., IBC, medium  
For more information contact Aileen, 867204,  
Christine, 861450, Gavin, 824722 or Rosey, 310380  
Just turn up - no need to sign up for a block - eve-  
rybody welcome

## **LINE DANCING, WRIH**

Tuesdays, 10.00-11.00am Sept - June  
All levels welcome  
Contact Ethel McHardy - Tel : 868538

## **PETERCULTER SPORTS CENTRE**

Coronation Road, Peterculter Tel : 732069  
Fitness studio, aerobics classes, creche  
Monthly membership or ad hoc prices

## **SCOTTISH COUNTRY DANCING, MCAH**

Wednesdays - 8.00-9.30pm  
All ages and beginners welcome  
Margaret Athawes, Tel. 733622

## **SCOTTISH COUNTRY DANCING, WRIH**

Tuesdays, 7.30 - 9.30 p.m. (mid Sept. to end

"Get Your Kids In On The Act!"



**YOUTH**  
Weedy classes in:  
**SWIMA - LARKING - JIGGING - DUTARS**  
working towards highly acclaimed  
Titles and Certifications,  
and encouraging  
**CONFIDENCE - DISCIPLINE - TEAMWORK**

Classes are in Aberdeen City Centre  
Call us NOW to enrol your child!

Website: <http://photos1990.harristoad.com>  
Email: [theone@harristoad.com](mailto:theone@harristoad.com)  
25 Balfour Street, Belford, Aberdeen, AB11 9BB

**01224 863946**

March)  
Contact Sheila Fyfe, Tel. 868164

## **SOCCER FOR 5-12 YEAR OLDS, CCC**

Wednesday afternoons, term time only  
3.30-4.15 Boys and Girls aged 5-7  
4.15-5.00 Boys and Girls aged 8-10  
5.00-6.00 Boys and Girls aged 5 and over  
Contact Ian Wilson - Tel : 07770-996767

## **SOCCER FOR OVER 30'S, CCC**

Thursdays, 8.30-10.00pm  
Contact Alistair Brown - Tel : 861314

## **ABERDEEN KILT KICKERS AMERICAN SQUARE DANCE CLUB**

Beginners - Mondays 7.30 - 9.30 pm (WRIH)  
Contact Sandra Allen, Tel. 715181

## **SWIMMING - ADULT/YOUTH ORGANISATIONS**

Various sessions Mondays to Fridays  
Contact Cults CC - Tel : 868858

## **SWIMMING - LIFESAVING CLUB (ADULTS 14+/ROOKIES/JUNRS 10+)**

Mondays 6.30-9.30pm  
Contact Anne Gwynne - Tel : 868846

## **CULTS OTTERS SWIMMING CLUB, CAP**

Open to children aged 4 to 13  
Learn to Swim Section & Junior Coaching Sections  
Contact Sonia, Tel : 316854 or email : [its@cultsotters.co.uk](mailto:its@cultsotters.co.uk)  
website : [www.cultsotters.org.uk](http://www.cultsotters.org.uk)

## **TAI CHI, CWC**

Wednesdays, 7.45-9.45pm  
Contact Don Wells - Tel : 310904

## **TAI CHI, SMH**

Mondays, 1.00-2.30pm  
Contact Neil or Nicolette - Tel : 01330-850675

## **WOODBURN WALKERS - RAMBLING FOR 50+**

Meet alternate Tuesdays at Hazlehead Bus  
Terminus, Travel by hire bus  
Average walk +/- 7 miles  
Contact Eleanor - 317197 or Margaret - 319741

## **YOGA, WSC WEDNESDAYS**

Wednesdays, 7.30-9.00pm  
Contact Fiona Britee, Tel : 868732  
Beginners welcome

## **YOGA, WSC**

For intermediate students  
Mondays, 7.40 - 9.30 p.m.,  
Contact Marian van Oorschot, Tel. 863985  
E-mail [marianoorschot@mac.com](mailto:marianoorschot@mac.com)

# Children & Youth Groups

## **AIR TRAINING CORPS**

107 (Aberdeen) Squadron  
Prince Charles Caden Centre, Albany Road  
Ferryhill www.107@aircadets.org  
Mon&Wed 7.00 - 9.30pm  
Open to girls and boys aged 13-20  
Contact Tel : 590679

## **BREATHE, IBC**

Fortnightly Youth Event S1-6, Grades 7-12  
Wii Gaming, Bouncy Castle, Tuck, Talk and more  
Fridays: 7.30-9.30 p.m.  
Contact : Andrew Hayes tel : 868096 or  
email : info@ibcaberdeen.org

## **CASPER AFTER SCHOOL CLUB, CCC**

Contact Marion Skea - Tel : 07762-250550

## **MILLTIMBER AFTER SCHOOL CLUB, MPS**

Mon. - Fri., 2.45 to 6.00 p.m.  
Contact Samantha Birch, Mob. 07890-862774

## **CULTS WEST 2'S PARENTS & TODDLER GROUP, CWC**

Mondays, 9.30-11.30 (Term Times)  
From 18 months to 4 years old. Siblings of toddlers already attending accepted from birth.  
Contact Gillian - Tel : 864215 or Lindsey - Tel : 861663

## **PARENT AND TODDLER GROUP, CWC**

Wednesdays, 9.30 - 11.30 a.m.  
Contact Lindsey Newton: 868727  
Thursdays, 9.30 - 11.30 a.m.  
Contact Andrea Vlaar, Tel: 865470 or  
e-mail a.vlaar@abcol.ac.uk

## **PARENT AND TODDLER GROUP, DCFC**

Tuesdays 9:45 a.m.  
Contact Robin Cordiner, Tel. 730171

## **PARENT AND TODDLER GROUP, MCAH**

Fridays 9.30-11.30 a.m. (term times)  
Contact Susan Ronald, Tel. 735204  
Email paulronald@talktalk.net

## **CULTS PLAYGROUP, COC**

Mon - Fri, 9.15-11.45am (From 21/2 - 5 years)  
Rising 5's - Wed, 1.00-3.30pm  
Contact Amanda - Tel : 07502 - 126363

## **GAELIC PARENT & CHILD GROUP**

Mon., Wed. and Fri. 9.15a.m. - 11.30 a.m.  
Gilcomstoun Primary School  
Lots of fun with the children while introducing and their parents to Gaelic. Complete beginners welcome.  
Contact Mairi Morley, Tel. 07900-337122,  
e-mail gaelic@aberdeencity.gov.uk

## **MAINLY MUSIC, IBC**

Caregivers and Toddlers (0-4)  
Dance, rhyme and rhythm; refreshments and toys  
Thursdays, 9.30-10.30am  
Contact, Laura Hayes - Tel : 744295

## **MILLTIMBER PLAYGROUP, MCAH**

Mon, Tues, Thurs, Fri.,  
9.30 a.m.-12.00 p.m.  
Lunch club same days  
12.00-13.00 p.m. (Term times only)

**Rising 5s,**  
Fri 1.00-3.00 (Tues  
Rising 5's coming soon)  
Nursery transport options available.  
Contact Lyndsay Hay,  
07519 902 470  
Email  
milltimberplaygroup@hotmail.com

## **PLAYGROUP AND RISING 5'S, DCFC**

Mon., Wed., Thurs. 9.15- 11.45 a.m.  
Mon. 1.00 - 3.30 p.m.  
Contact Rhona Magowan Tel: 733350

## **ST DEVENICKS PLAYGROUP AND RISING 5'S, SDCH**

Playgroup: Monday - Friday, 9.20am-11.50 am  
Lunch club, Wednesday 11.50am-1.00pm  
Rising 5s, Tuesday & Thursdays, 12.30-3.00 pm  
Contact Lyndsay, Tel. 741251 or  
Playgroup, Mob. 07931 223545

## **TOTS AND TODDLERS, SDCH**

Wednesdays, 2.00 - 4.00 p.m.  
Contact Michelle, 861755

## **CHALLENGERS P4-P7 GROUP, DCFC**

Wednesdays 7:30 p.m.  
Contact Shenagh Walker, Tel. 733275

## **SCOTTISH COUNTRY DANCING, SDCH**

Tuesdays, 4.00 - 5.00 p.m. for primary school children  
Contact Judith Riddoch, Tel. 865909  
Email judithriddoch@aol.com

## **SNAC, IBC**

Youth Group for S1-6, Grades 7-12  
Sundays: 7.00 -9.00 p.m.  
Email info@ibcaberdeen.org

## **GUIDES, BROWNIES AND RAINBOWS**

**1st Cults Rainbows, CWC**  
Mondays, 4.00 - 5.00 p.m.  
Contact Claire Moore, Tel 869039

## **3rd Cults Rainbows, CWC**

Fridays, 4.30 - 5.30 p.m.  
Contact Morag Williamson Tel: 867967

## **1st Cults Brownies, CA**

Mondays, 6.15 - 7.30 p.m.  
Contact Dorothy Forbes, Tel 486357

## **2nd Cults Brownies, COC**

Tuesdays, 6.15 - 7.30 p.m.  
Contact Jill Sutherland, Tel 734540

## **3rd Cults Brownies, CCC**

Tuesdays, 6.15 - 7.30 p.m.  
Contact Jan Mackintosh Tel: 865916

## NATURAL THERAPIES

Gwen Wilks FICHT

AROMATHERAPY  
BOWEN TECHNIQUE  
REFLEXOLOGY

REIKI

SWEDISH MASSAGE  
INDIAN HEAD MASSAGE  
HOPI EAR CANDLES

Gift Vouchers Available

Chelsea House Clinic  
215 North Deeside Road  
Peterculter  
Phone: 01224 733303

Riverside Clinic  
585 Holburn Street  
Aberdeen  
Phone: 01224 211517  
Mobile: 07775 787680

Rosemount Osteopathy  
26 Northfield Place  
Aberdeen  
Phone: 01224 635999

## **1st Cults Guides, CA**

Mondays, 7.30 - 9.00 p.m.  
Contact : Karen Pether, Tel 734527

## **2nd Cults Guides, COC**

Thursdays, 7.30 - 9.00 p.m.  
Contact Anne O'Neill, Tel 861467

## **Milltimber Rainbows, MCAH**

Thursdays 4.15 - 6.15 p.m.  
Contact Alison Garden, Tel. 868821

## **Milltimber Brownies, MCAH**

Wednesdays. 6.00 -7.30 p.m.  
Contact Elaine McGuffie, Tel. 733636

## **District Commissioner for Cults**

- Jan Mackintosh, Tel. 865916  
District Commissioner for Milltimber and Culter  
- Elaine McGuffie, Tel. 733636  
Divisional Commissioner for Cults, Milltimber and Culter  
- Dorothy Forbes, Tel. 486357

## **BEAVERS, CUBS AND SCOUTS**

### **17th Aberdeen Cub Scouts, SCPT**

Tuesdays, 6.30 - 8.00 p.m.  
Contact Gerry O'Brien, Mob. 07795-290595  
Email - gerryobrien@hotmail.com

### **Beavers, Cubs and Scouts, MCAH**

Beavers - Mondays 4.15 - 5.15pm  
Contact Fiona Douglas, Tel: 735523

Cubs - Tuesdays 6.30 - 8.00pm

Contact Barbara Stroud, Tel: 732591

Scouts - Fridays 7.30 - 9.30pm

Contact Geoff Weighill, Tel: 869115

### **21st Aberdeen (Cults) Scout Group, SCC**

Scouts - Fridays, 7.30 - 9.30 p.m.

Cubs - Tuesdays, 6.45 - 8.15 p.m.

Cubs - Thursdays, 7.00 - 8.30 p.m.

Open to boys and girls aged 8 to 10

Contact Maureen Eunson Tel 868526

Beavers - Wednesdays, 4.30 - 5.30 p.m.

Open to boys and girls aged 6 to 8

Contact Karen Southworth, Tel. 869557

Deeside Explorer Scout Unit -

Explorer Scouts, SCC

Every second Monday 8.00 - 10.00 p.m.

Open to boys and girls, aged 14 to 17

Contact Alastair Govan, Tel. 743863

# Hobbies and Social

## **CULTS O50 CLUB, COC**

Wednesdays, Lunch from 12.00  
Announcements/speaker 1245  
Other activities include bridge and  
scrabble, walks, theatre, cinema, local  
history outings, garden visits, art  
appreciation, computer classes, Spanish  
classes - the list is endless! Open to  
anyone over 50, not only Cults residents.  
Details of activities on the website  
[http://www.cultsparishchurch.co.uk/O50/  
Index.htm](http://www.cultsparishchurch.co.uk/O50/Index.htm)

## **MILLTIMBER O50 CLUB, MCAH**

Activities for men and women over 50.  
Contact John Park, Tel. 733057

## **MILLTIMBER COMMUNITY ASSOCIATION, MCAH**

Wide range of activities for all ages.  
Chair - Andrew Duthie, Tel : 739797  
Secretary - Sue Smedley Tel : 732172  
To hire the hall : Mob - 07502 040 619

## **ADULT ART CLASSES, IBC**

Wednesdays, 1.30 - 3.30 p.m.  
Contact Jenny Hunter, Tel. 07751715343

## **ABERDEEN BRIDGE CLUB**

14 Rubislaw Terrace, Tel : 644773  
Monday to Thursday - 7.00-10.00pm  
Adult Lessons Wed - 7.00pm Sept - April

## **BRIDGE GROUP, CCC**

Tuesdays, 7.00-9.30pm  
Contact Irene Main - Tel : 318167

## **CULTER BRIDGE CLUB, PVH**

Fridays, 1.15 - 4.00 pm Sept.- April  
Contact Peter Garioch Tel : 324691

## **CALLIGRAPHY GROUP, COC**

Tuesdays and Thursdays - 10.00-12.00pm  
(2 x 10 week sessions from September and  
January)  
Contact Isobel Archibald - Tel : 867303

## **COMPASS GROUP, CWC**

Every 2nd Wednesday, 7.30 p.m.  
October - March  
Talks and conversation, all ages welcome  
Contact Lyall Anderson - Tel : 867411

## **COMMUNITY LEARNING - VARIOUS VENUES\***

Day and evening courses in a wide variety of  
subjects including Italian, Spanish, German,  
Computing, Art and general interest classes.  
Contact Alison May, Adult Learning Coordi-  
nator, at Cults Community Centre on 01224  
868858 or email [cultsadultlearning@rmpc.  
co.uk](mailto:cultsadultlearning@rmpc.co.uk). The website [http://beehive.thisisnorth-  
scotland.co.uk/cultscc](http://beehive.thisisnorth-scotland.co.uk/cultscc) gives details of courses  
on offer.

## **THE HUB COFFEE SHOP, COC**

Tuesdays and Wednesdays - 10.00-3.00pm

## **CRAFT AND NEEDLEWORK CLASS, NORTH HALL, CWC**

Fridays, 1.30 p.m. - 3.30 p.m. 10 weeks £50.00  
Beginners and more experienced catered for  
Contact Yvonne Weir, Tel. 732098 /  
[Yvonne.weir@virgin.net](mailto:Yvonne.weir@virgin.net)

## **CULTS STRATHSPEY AND REEL SOCIETY COC**

Every 2nd Wednesday - 7.30-9.30pm  
Contact Fred Robertson - Tel : 310970



The poster features a woman in a black leotard and pink tutu. The text is on a pink background. At the top left is the 'Taylor school of dance' logo. On the right, the word 'CLASSES' is written in large, bold, pink letters. Below this, two columns of class names are listed: 'KIDS' and 'ADULTS'. At the bottom, contact information is provided: 't: 07531 811506 | e: [gaelie@taylordance.com](mailto:gaelie@taylordance.com) | w: <http://www.taylordance.com>

**KIDS**

- BABIES & PRE-SCHOOL DANCE
- BALLET
- MODERN THEATRE
- JAZZ
- TAP
- BOYZ ONLY STREET MOVES  
(PERMAN, JUNIOR & SENIOR CLASSES)
- GIRLZ STREET JAZZ
- MUSICAL THEATRE (NEW)

**ADULTS**

- PARENT & TODDLER DANCE (NEW)
- ZUMBA FITNESS (NEW)
- JAZZ
- TAP

## **DEESIDE CHORISTERS, CCC**

Wednesdays, 6.30-8.00pm  
New members most welcome  
Contact Nancy Paul - Tel : 741378

## **DRESSMAKING GROUP, KMCC**

Thursdays, 09.30-11.30 a.m.  
Couture trained tutor  
Beginners welcome  
Phone Kaimhill Community Centre, Tel.  
311996

## **FOLK AT THE HUB, COC**

Monthly on the 2nd Friday, 7.30pm Sept -  
June  
Both musicians and listeners most welcome!  
Bring your own beverage! Tel : 867951

## **CULTS LIBRARY**

See separate item in MBC News for opening  
times and details of the wide range of courses  
and activities on offer.

## **CULTS LUNCH CLUB, COC**

Mondays 12.00-2.00pm (except for July)  
Contact Jackie Hatchwell, Tel : 861736

## **MODEL CLUB - ADULT CCC**

1st Tuesday of the month, 7.30 - 10.00 p.m.  
Contact Martin Smith, Tel. 01467 642919

## **ROTARY CLUB OF ABERDEEN DEESIDE**

Wednesday's 6.15 for 6.45 pm in the Cults  
Hotel. For further information contact the  
secretary Quentin Tweedie on 01224 868218  
email [qtweedie@btconnect.com](mailto:qtweedie@btconnect.com)

## **SALTIRE SOCIETY**

Promotes all things Scottish. Meets monthly  
on Tuesdays, normally in Rubislaw Parish  
Church. (See article in magazine for details)  
Contact D J Robertson, Tel. 484061

## **SCRABBLE CLUB, MCAH**

Fridays, 2.00-4.00pm  
Players at any level are very welcome  
Contact Joan Thomas - Tel : 733218

## **ABERDEEN GAELIC CLUB**

Brings together Gaelic speakers and  
individuals interested in Gaelic language and  
culture. The Club organises Gaelic language  
evening classes and weekend courses in  
Harlaw Academy, plus social activities.  
Tel 07779-398289, e-mail [clubgaidhlig@  
googlemail.com](mailto:clubgaidhlig@googlemail.com) or  
[www.aberdeengaelic.wordpress.com](http://www.aberdeengaelic.wordpress.com).

## **ABERDEEN TOASTMASTERS (PUBLIC SPEAKING CLUB)**

Meets at Northern Arts Club (NAC), 1st, 3rd,  
5th Thursdays of every month - 7.00-9.00pm  
Visitors are welcome - no cover charge.  
Website : [www.aberdeentostmasters.org.uk](http://www.aberdeentostmasters.org.uk)  
Contact Matthew Mtumbuka - Tel : 861028  
Email : [matthews@mtumbuka.com](mailto:matthews@mtumbuka.com)

## **PETROLEUM WOMEN'S CLUB**

International friendship club for women  
connected to the oil industry. Meetings with  
speaker, 1<sup>st</sup> Thursday of the month  
Coffee mornings, 3<sup>rd</sup> Thursday of the month.  
Many sub-groups such as ten pin bowling,  
walks, bridge, golf, dinner club, French  
conversation and a book group.  
Contact Elaine Anderson, Tel. 867736 or  
Rosalind Barker, Tel. 747802  
or email [pwscotland@yahoo.co.uk](mailto:pwscotland@yahoo.co.uk)

## **SCOTTISH WOMEN'S RURAL INSTITUTE, WRIH**

1st Thursday of every month, 7.30-9.30pm  
(Not July or August)  
Contact Helen Johnston, Tel : 867726 or  
Lyn Pithie, Tel : 867614

## **GRAMPIAN WOODTURNERS, SDCH**

Meet last Sunday in the month, 2.00 p.m.  
New members are most welcome.  
Meetings consist of member participation,  
demonstrations etc.,  
Contact Bill Diack, Tel. 01467-622772



# FRISKIS&SVETTIS

Aberdeen



## Exercise to Inspirational Music Improve your Fitness, Flexibility and Strength Have fun !

International Baptist Church Cults  
Milltimber Community Centre

Pay per class at a venue near you

See listing at back of MBC News for class times.

Visit [www.FSAberdeen.co.uk](http://www.FSAberdeen.co.uk) or phone 01224 861450

## The next Bag2School Drop Off date is Saturday 7th May 2011

Bring your old clothes, shoes, bags, belts and soft furnishings to Cults Primary School (main entrance) between 10am and 12noon. Items will be passed onto charities and sold on for re-use or recycling. The school receives commission on each tonne donated.

To find out more about the Bag2School scheme, please contact the PTA via the school.



## Neighbourhood Watch



The AGM of Grampian NWA was held on 27<sup>th</sup> October and the audience were treated to talks by no less than three police inspectors - Craig Menzies, Gordon McDonald and Andy Imray. Emma Bellu, chief executive of Aberdeen Safer Community Trust also contributed to a wide ranging set of topics covering drugs taking, making and distribution, the functioning of the new LPTs (Local Policing Teams), working with communities and the dissemination of information to Neighbourhood Watches.

A large audience was relieved to hear that the cutbacks, which are to affect all branches of society, will not affect front-line policing. The meeting was assured that, although we may gain an impression of wholesale violence and destruction from the press and news broadcasts, the actual likelihood of involvement is very remote indeed.

The welcome return of the weekly Police Bulletin (in the form of a Community Safety Bulletin) has aroused interest. Your feedback would be appreciated. The articles reflect the closer engagement of the police with local communities. Appeals for information, feedback on investigations, general news and news of events are all helpful. The 24th December issue gave detailed advice on winter driving. Warnings of computer and other scams can be found on [www.grampianawa.org.uk](http://www.grampianawa.org.uk). [Dave, t : 861176]

## Piano Tuition

Flexible times

Exams, music theory or just playing for pleasure

All ages welcome

Beginners too!

Please contact Becky on Mob: 07907 129851

Email: [rebeccapratides@yahoo.co.uk](mailto:rebeccapratides@yahoo.co.uk)

### Adult and Baby, Adult and Child, Pre-school lessons.

Lessons are held in the heated pool at Camphill School Aberdeen Murrie Estate, Bieldside, AB15 9EP)

Tuesday, Thursday and Friday 12.30 - 3.00 (duration 30 minutes)

Fully qualified experienced swim teacher

- Adult and Baby 9 - 12 months
- Adult and Toddler 1 - 2 years
- Adult and Child
- Pre school
- Adult beginners/non swimmers

Small groups. First aid qualified pool supervisor present at all times. Classes are £6.00 per session, payable termly.

For more information contact:

Julie McQuillan

Telephone number 01224 279553 Mobile number 07906 863246

Email: [buoyancy@btinternet.com](mailto:buoyancy@btinternet.com)

# ANDY LOVELL DÉCOR LTD



City & Guilds  
Advanced Crafts

## PAINTER & DECORATOR Services tailored to suit your home

Mobile 07939 150 858

For a free consultation call  
Milltimber - 732 070

# Cycle China 2010

In September 2010 Karen Griffiths and Allison Robb, both of Bieldside, set out on a 450km cycling adventure of a lifetime to Beijing, China. The following is a brief account of their highly successful trip.

We left Aberdeen, our families and friends on a lovely autumnal day in early September and enjoyed a pleasant day wandering around Heathrow Terminal 5, our cycle hats swinging from our back packs being the only clue as to our intended travel plans. It was almost a full 12 months earlier when we both signed up to Professor Robert Winston's Charity Challenge to cycle 450km through the Beijing countryside to the Great Wall of China to raise money for Women for Women (the fundraising name for Genesis Research Trust). We literally got on our bikes and started some pretty serious training and also set about starting to raise the funds required. What a 12 months it turned out to be!



Our late afternoon flight left London and 10 hours later we arrived early in the morning at Beijing International Airport and so began an unforgettable adventure. Our first two nights accommodation was in a very modest hotel on the outskirts of central Beijing (no hot water). On all sides we were surrounded by four lane highways, large industrial factories and thousands of cars and trucks rumbling by all day and night. The only glimpse of rural China was the distant mountains on the horizon – our eventual destination. Having spent two days learning more about the challenge, meeting the other 80 women and support staff, getting

our bikes fitted and generally acclimatising we were eventually ready for the off. Back in Aberdeen we had been led to believe that daytime temperatures in Beijing Province in September would be in the range of 18-22°C; as it turned out they were experiencing unseasonably high temperatures and when we set off on the first day it was actually a blisteringly 31°C, and the first part of the day was spent following the four lane highway past Shungyi (Olympic Rowing Village) out of the city limits towards the hills. The truth was we never actually left the busy roads and large towns for three days and even spent one lunchtime sheltering under a very busy motorway underpass – a first for most of us!

By day two, we had already lost one or two of our party to heat exhaustion, but the rest of us very quickly learnt how to cope with the soaring temperatures, which involved covering our heads with a scarf under our helmets and frequently pouring water over our heads, also drinking copious amounts of rehydration fluids which meant frequent stops by bushes, which with 80 women in the group, quickly meant our modesty was shelved. Despite the heat and the traffic and the varying hotel standards we had a sense that we were really part of something very special. The other participants provided a great source of support and camaraderie and the support crew, both UK based and local Chinese were wonderful. We'll never forget the smiling, and slightly bewildered locals shouting and waving as we cycled past on our Trek 300's. The

Chinese greeting "Ni Hao" could be heard ringing out in a variety of accents all day long.

Eventually and thankfully we turned off the busy roads and started climbing towards the Great Wall. The roads were much quieter

in the mountain area and the scenery more attractive, but the day we arrived at the Great Wall, the popular tourist section at Mutianyu, the temperatures were still in the 30's. All the months of training really came in as we willed ourselves up the windy, steep pass to the Mutianyu Cable Car area. The looks on the faces of the passing tourists sitting in their air conditioned buses as we toiled up the hill said it all. When we finally set foot on that beautiful and ancient wall it was immense, the sense of achievement was overwhelming and we were rewarded with stunning scenery against a cobalt blue sky, an unbelievable panorama. However, our journey was not complete, we still had two and a half days cycling to go and many steep mountain passes which meant some serious downhill sections and this is where the group experienced the first of several accidents. By the end of the challenge we had one woman in hospital with broken bones and several bandaged and stitched. One woman who had been injured in a crash bravely cycled on to the end, such was the determination by all the women to complete the cycle.



On the final day, our group, exhausted and sore, set off on the last 50km in pouring rain and a cold wind to our final destination of Badaling. Having crossed several more towns and cycled yet again alongside a dual carriageway it was a slightly bedraggled, but an immensely proud and formidable bunch of women who crossed the finish line. We celebrated in style with a beer and lunch before saying goodbye to our bicycles (to which we had become very attached) and set off on the slow and gridlocked journey back into Beijing.



It was a truly amazing experience which, despite the challenges and difficulties, was not to be missed...and what a way to see that part of China! Fantastic.

Our group raised over £600,000 for Women for Women; Karen and I personally raising £5895 which all went to the charity. Thanks to all who supported us. Donations can still be made by visiting [www.genesisresearchtrust.com](http://www.genesisresearchtrust.com)

In November this year the charity are taking their bikes for another 450km challenge starting from Panama and ending in Granada...anyone fancy a cycle?



**EIGHTYSEVEN  
ARCHITECTURE**

[www.87architecture.com](http://www.87architecture.com)

t. 01224 209 100

Creative local company with personal service

Contemporary energy-efficient architecture for new-build and refurbishment

Complete Architect's Service including feasibility, design and contract management



# THE BARBER'S POLE

## OPEN 7 DAYS

**No appointments necessary**

### Opening Hours

Mon Tues Wed Fri **08.30 ~ 18.00**

Thursday **08.30 ~ 19.00**

Saturday **08.00 ~ 17.30**

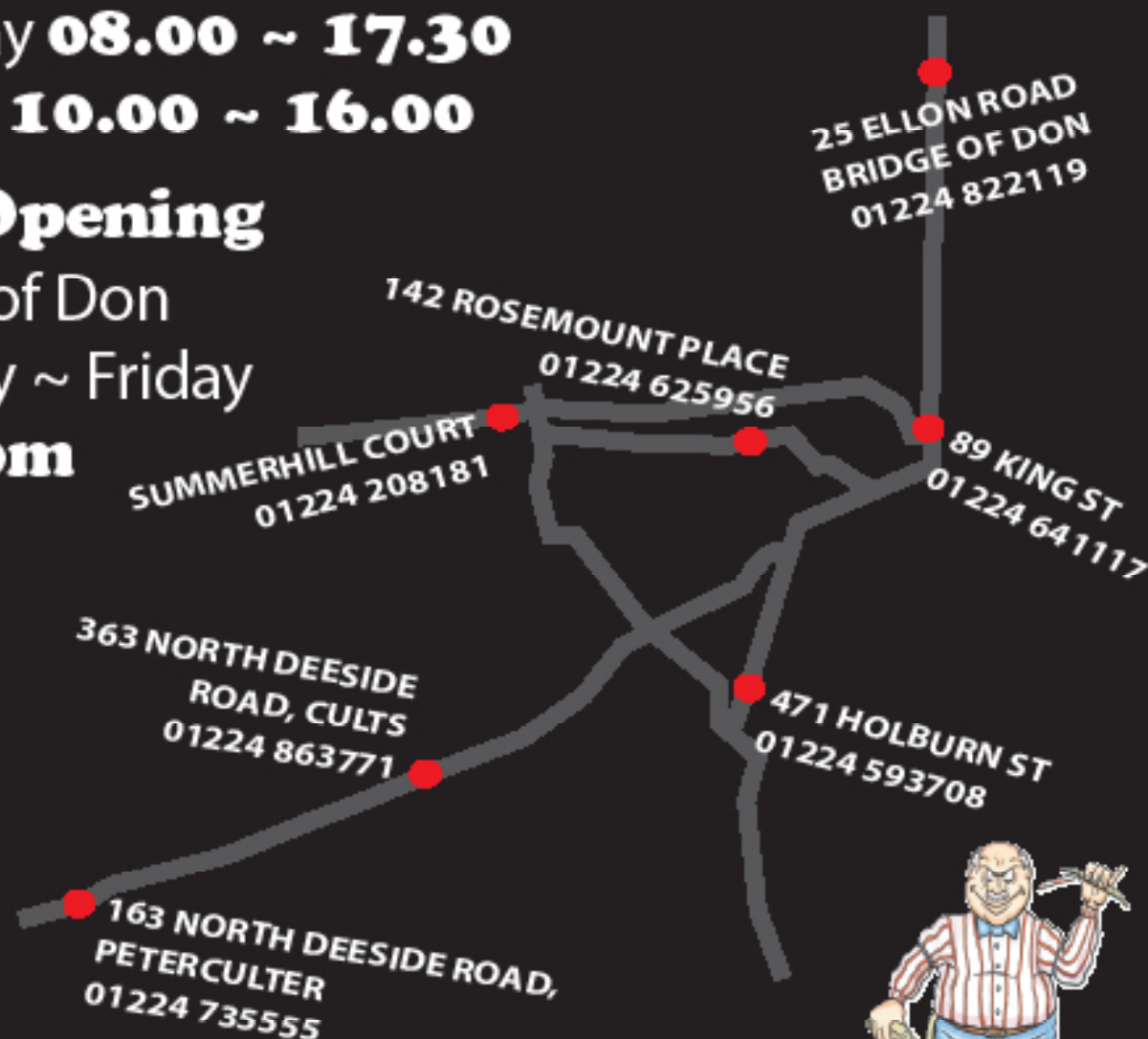
Sunday **10.00 ~ 16.00**

### Late Opening

Bridge of Don

Monday ~ Friday

**till 7pm**



[www.thebarberspole.co.uk](http://www.thebarberspole.co.uk)